



# Sustainable Kent News

The latest on sustainability efforts in Kent



Sustainability Commission

## INSIDE

### Chronicling Implementation of the Climate Action Plan (CAP)

Learn more about the findings from the City’s Carbon Energy Audit

### Around the City

Sustainability Commission -  
Diverting reusable items from the waste stream

Branded in Kent – Branded’s  
Commitment to Sustainability

Sun in Leo – A Circular Marketplace

PARTA moves toward zero  
emissions

### Calendar

Find upcoming events and other  
items of interest



Happy Fall Y’all! Fall is a wonderful time to think about energy efficiency as the air turns crisp and thoughts turn to readying our homes for the coming cold of winter!

In this edition of Sustainable Kent News, you’ll find information about the City’s recent energy audits conducted on four of our buildings that are significant energy users, and the auditor’s suggested energy conservation measures for same.

Please also look for information inside about our upcoming CAP Open House Series event on October 30<sup>th</sup>, focused on energy efficiency, including programs available to residents to help them take efficiency measures in their own homes. This is the third event in an ongoing series that seeks to share information about the City’s CAP work with the public and provide educational opportunities around topics within sustainability.

You’ll notice our expanded Around the City feature in this edition. Is your organization, business, or other group working on sustainability initiatives? If so, reach out to us (contact Julie Morris - information below) with the details about your work to be included in a future edition. Our intent with this recurring column is to help share not just about efforts made within the City’s departments, but to also share about the work our community is doing to help reach sustainability goals.

Should you ever have questions, comments, and/or suggestions related to the City’s CAP or other sustainability work, please feel free to contact the City’s Sustainability Coordinator, Julie Morris, at: [julie.morris@kentohio.gov](mailto:julie.morris@kentohio.gov).

## CHRONICLING IMPLEMENTATION OF THE CLIMATE ACTION PLAN



### The results are in!

Back in November of 2023, NOPEC alerted Kent City Council that the City of Kent was selected as one of only 5 NOPEC communities to receive an additional resource in the realm of decarbonization and sustainability planning as part of NOPEC’s new Resiliency and Sustainability Support program. Part of this resource involves the provision of a consulting and research team from the global comprehensive energy solutions company, World Kinect.

The City provided World Kinect with a wide variety of data related to city properties and associated energy use, including the City’s most recent Green House Gas Inventory Update. Utilizing same, the team at World Kinect was able to provide an initial glidepath report, providing a portfolio of City building energy and carbon emission analysis, and some initial recommendations for efficiency and decarbonization measures for consideration.

As a result of their initial analysis work, the World Kinect Team connected the City to the COSE (Council of Smaller Enterprises) program with Greater Cleveland Partnership (GCP) that paid for ASHRAE Level 2 energy audits for four of our City buildings identified in the glidepath as being significant energy users: Kent’s Police Department, Fire Station No.1 (downtown), the Service Administration Complex at Overholt, and the City’s Vehicle Maintenance Facility.

These facility audits were completed in June 2024, and the final reports are in!

Before diving into the results, some of you may be asking, “What’s an ASHRAE Level 2 Energy Audit” anyway? As per our final audit reports, the auditors explain, “The scope of this audit adheres to the guidelines developed by the American Society of Heating, Refrigerating and Air-Conditioning Engineers (ASHRAE) for a Level 2 audit. As described in ASHRAE’s Procedures for Commercial Building Energy Audits, a Level 2 ‘Energy Survey and Analysis’ will identify and provide the savings and cost analyses of all practical energy efficiency measures that meet the

## **Sustainable Kent News**

owner's/operator's constraints and economic criteria, along with the proposed changes to Operation and Maintenance (O&M) procedures.

A Level 2 audit includes a more detailed survey than a Level 1. Utility analysis is performed based on historical energy bills which may cover consumption data as well as peak demand. It may also provide a listing of potential capital-intensive improvements that require more thorough data collection and engineering analysis. Cost and savings analysis is performed for each measure recommended for implementation. This level of analysis should provide adequate information for the owner/operator to act upon recommendations for most buildings and for most measures.”

The following is a summary of the Energy Conservation Measures the auditors are suggesting and the potential savings implementing those measures could result in for each of the analyzed buildings:

### Police Department:

- Add Solar PV system
- Re-establish Variable Frequency Drives – Hot Water Pumps
- Add air purifier to evidence room
- Implementing these measures could result in:
  - 12.66% less electricity
  - 0% less natural gas
  - 7.98% reduction in overall site EUI
  - 7.23% reduction in GHG emissions

\*It should be noted this building is LEED Silver Certified making it an already very efficient building.

### Fire Station No. 1:

- Addition of Demand Controlled Ventilation to HVAC system
- Lighting upgrade from remaining fluorescent to LED
- Roof Top Unit (RTU) Zoned Controls
- Replace Natural Gas Packaged RTU
- Add Solar PV on bay roof
- Implementing these measures could result in:
  - 44.18% less electricity
  - 4.07% less natural gas
  - 16.42% reduction in overall site EUI
  - 20% reduction in GHG emissions

### Service Administration Complex:

- Add a Solar PV system to the building
- Lighting upgrade from T8/T5 fluorescent to LED
- Replace Natural Gas Packaged RTU (2001) Unit
- Implementing these measures could result in:
  - 24.82% less electricity (96.1% if PV used)
  - 0.09% less natural gas
  - 8.49% reduction in overall site EUI (35.8% if PV used)
  - 42.62% reduction in GHG emissions (62% if PV used)
- Other suggested measures not included in these calculations:
  - HVAC system upgrades
  - HVAC Zoned Controls Upgrade on existing HVAC
  - Potential building envelope improvement

Vehicle Maintenance Facility:

- Equipment Storage Roof repair and insulation upgrade
- Lighting upgrade from fluorescent to LED
- Implementing these measures could result in:
  - 13.35% less electricity
  - 47.29% less natural gas
  - 34.76% reduction in overall site EUI
  - 17.95% reduction in GHG emissions

These audit reports will help guide the City when considering capital projects, upgrades and/or sustainability projects for these facilities in the future. ASHRAE Level 2 audits are generally required in order to apply for grants used to help pay for projects that utilize energy efficiency and other measures.

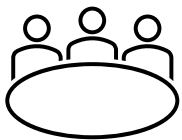
We will be discussing these energy audit reports at our next **CAP informational Open House scheduled for October 30<sup>th</sup> from 6-7pm at the Kent Free Library's upstairs community room.** In addition to a presentation from the City about the above-described facility audits, additional information will be shared by the Community Action Council of Portage County about area energy and housing programs that can connect folks to efficiency and home repair related initiatives. After the presentations, there will be an opportunity for a Q&A, as well as the option to browse a variety of program materials. We hope you'll join us!

Stay tuned as we'll be providing more information via our newsletters, website, and other outlets as the various reports and analysis related to this work become finalized and available.

**VISIT OUR RECENTLY UPDATED SUSTAINABILITY OVERVIEW WEBPAGE!**

The City has a new webpage to feature our Sustainability work and keep you posted about our related CAP implementation progress, programs, news, events, and more!

Visit: [Sustainability Overview | City of Kent \(kentohio.gov\)](https://www.kentohio.gov/sustainability-overview)



**AROUND THE CITY**



**Diverting Reuseable Items from the Waste Stream: One Person's Trash is Another's Treasure**

**By Julie Grant, City of Kent's Sustainability Commission**

I have a little secret. Much of the furniture in our beloved home comes from the ReStore in Kent, and other reuse shops. My family teases me because I'm often checking out the paint supplies, sofas and chairs, tables, and knickknacks at the ReStore.

## Sustainable Kent News

Of course, many people, might not realize that what they put on the side of road as trash, that winds up at a landfill, has value to other people.

A former member of Kent’s sustainability commission recently wrote to the city’s sustainability coordinator with concerns about seeing a “trash pile” along South Willow street that included a perfectly good Pyrex baking pan with a fitted lid, “Why would anyone throw such a thing out?” they wondered. They also found food containers, dishware, and a twin bed comforter. “We probably took \$50-\$60 worth of stuff. And we were puzzled. Why would students throw this stuff away and start from scratch wherever they move...?”

Whether folks are moving out, cleaning out a rental, or simply cleaning out their garages, closets, pantries or supplies, they could consider items for donation or recycling instead of throwing them out. The Sustainability Commission, after reaching out to area agencies, wanted to offer some alternatives for people to donate the gently used items that they no longer want, and a list of local resources can be found below. Please note, this is not an exhaustive list. Please also be sure to visit each program website to learn more and call the facility with any questions.

## WHERE TO DONATE

### **The ReStore:**

As described on their website, “The ReStore is part of Habitat for Humanity of Portage County. It is full of things to refurbish, remodel, renew, and redefine your home. The ReStore [accepts donations](#) of new and nearly new building supplies, furniture, and appliances --and sells these at huge discount prices. It helps keep usable materials from going into landfills, too. Habitat uses the proceeds to build and rehab houses in Portage County for those in need of decent and affordable housing.”

Bradley Knife, Kent’s Restore Manager suggests folks call the Restore before donating. If their items are something the ReStore can’t accept, staff can usually point folks to somewhere else that can take the items. Bradley noted folks need to call 330-677-8881 and **use Option 1** to get through to the store and have their donation questions answered. For more information, check out [Habitat for Humanity of Portage County](#).

### **Portage County Recycling: Center for Hard to Recycle Materials (CHaRM):**

When people move, or clean out, their homes, and don’t know what to do with items that can’t go in curbside trash or recycling bins, there is an alternative. As noted on their website, “CHaRM facilities provide outlets for materials that cannot go in curbside trash or recycling carts. Some of the acceptable items include appliances, scrap tires, cooking oil, plastic bags, electronics, paper shredding, automotive liquids, batteries and scrap metal.”

Dawn Collins, director, suggests folks find more information about the materials they accept and hours of operation on their website [CHaRM Facility \(portagerecycles.com\)](#) and to call 330-678-8808 with questions.

## Sustainable Kent News

### Shepherd's House (formerly known as The Haven of Portage County):

Another non-profit organization, Shepherd's House details their mission on their website as, "a dedicated non-profit organization that provides shelter, support, and resources for individuals facing homelessness and crisis situations. Our mission is to offer a safe environment where individuals can rebuild their lives, access essential services, and regain their independence. Through the grace of God, compassionate care, and tailored assistance, we aim to empower those in need and guide them towards a brighter future."

Ann Marie Noble, executive director, advised they can accept donations of toilet paper, paper towels, tissues, napkins, paper plates, bath towels, laundry detergent, toilet bowl cleaner, sugar, and powdered coffee creamer.

Visit their website at [Home | Shepherd's House \(shepherds-house.net\)](https://www.shepherds-house.net) . Contact the facility for their most current needs at 330-235-8600.

### Phyllis Zumkehr County Clothing Center

"Our mission is to provide free, gently-used clothing and other personal and household items to families and individuals in need—all while reducing waste within the community and providing a positive experience for volunteers."

Candy Pollard, program manager noted that "Clothing, shoes, blankets, sheets, small household necessities, everything must be clean (ready to use) and in good shape. But they do need to call to be sure it is something we will accept and also to **schedule a donation appointment**. 330-296-0503 **Items cannot be just dropped off outside! Appointments are needed to donate.**"

Learn more at: [The Phyllis Zumkehr County Clothing Center - Family & Community Services, Inc. \(fcsserves.org\)](https://www.fcsserves.org)

### Kent State University:

Melanie Knowles (Sustainability Manager at Kent State) and Leah Graham (Sustainability Coordinator at Kent State) pointed to several initiatives on the KSU Campus related to waste diversion where folks can either donate unwanted items or obtain used ones if needed (full list of events here: [Events | Kent State University](#)):

[Kent State Career Closet](#)

[Kent State University Surplus Store](#)

[Bra Recycling Drive](#), runs through November 1, 2024.

[Winter Coat and Clothing Drive](#), runs from Nov 1 - December 13, 2024

[Campus Race to Zero Waste](#), begins in spring

[Electronics Recycling](#), for KSU owned electronics, personal electronics, and the March community drop-off days



## Branded In Kent

### Branded's Commitment to Sustainability

By Kelsi Biondo

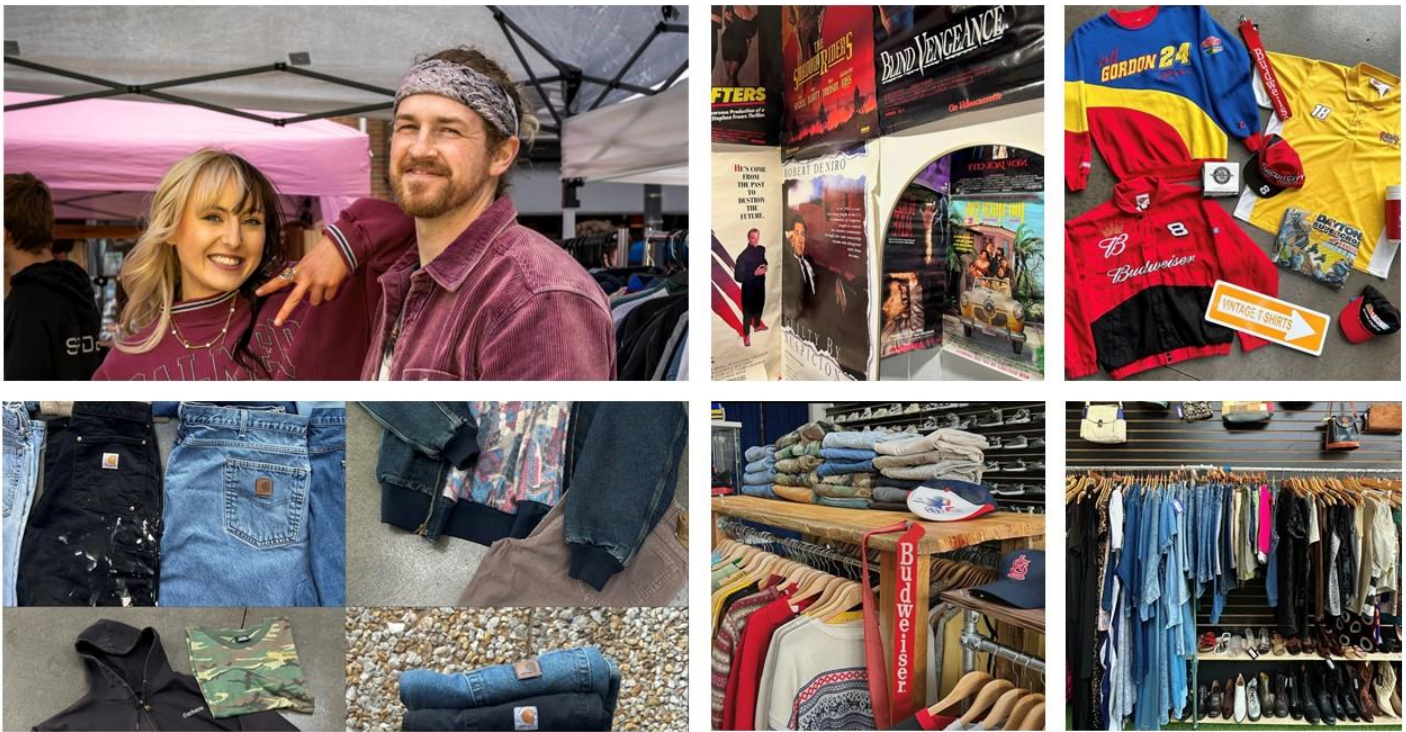
At Branded, we believe that fashion and lifestyle products can make a positive impact on the world without compromising style or quality. Our sustainable business model is built on a foundation of environmental responsibility, ethical practices, and community engagement. 'Turning clothing waste into sustainable fashion'



**1. Emphasis on Vintage and Pre-Loved Goods**  
At the core of our business is the commitment to extending the life cycle of fashion and home goods through the reselling of vintage and pre-loved items. By curating high-quality, unique pieces, we not only offer customers one-of-a-kind finds but also help reduce waste and the demand for fast fashion. Every vintage piece sold at Branded represents a step towards a circular economy, where items are reused and repurposed rather than discarded.

**2. Supporting Local Artisans and Handmade Goods**  
In addition to vintage reselling, Branded partners with local artisans and small businesses who share our passion for sustainability. By showcasing handmade goods from the Socially Sustainable Sweatshop, we promote craftsmanship that values quality over quantity and encourages thoughtful consumerism. We also collaborate with Kent University's Fabric Pantry. These collaborations help foster a local economy and reduce the carbon footprint associated with mass-produced goods.

**3. Eco-Friendly Operations**  
At Branded, sustainability isn't just a goal—it's an integral part of our operations. We are proud to operate our own textile recycling facility, where we process over 50,000 pounds of textile waste every month. This initiative helps divert a significant amount of material from ending up in landfills, directly reducing environmental pollution. By repurposing and recycling textiles, we contribute to a circular economy, ensuring that fabrics and fibers get a second life in new products. Beyond this, we use eco-friendly packaging, energy-efficient processes, and recycling practices across all areas of our business to further minimize our environmental footprint. Additionally, we are committed to recycling and upcycling whenever possible, ensuring that waste is kept to a minimum.



#### 4. Educating and Engaging Our Community

At Branded, sustainability goes beyond our products—it's about building a community that values ethical consumerism. Through our social media platforms, including @brandedinkent and @brandedinbutler, we regularly share tips on sustainable living, upcycling projects, and the importance of mindful shopping. Events like the Rainbow Revival Market further our mission by creating spaces where like-minded individuals can come together to celebrate and support sustainable, handmade, and vintage goods.

#### 5. Long-Term Vision for a Sustainable Future

Branded is continuously evolving our practices to align with the latest in sustainability innovation, diverting over 1 million pounds of textile waste from landfills in the past 2 years. Our long-term vision is to become a leader in eco-conscious business by exploring new ways to reduce waste, support local economies, and inspire a culture of sustainability within our community.

Website: [www.brandedinbutler.com](http://www.brandedinbutler.com)

Instagram: @brandedinkent

Tik Tok: @brandedinkent\_

Address: 100 E Erie St Ste 122 Kent, Ohio 44240

Store Hours: Monday - Saturday 12-8pm Sunday 12-6pm





## Sun in Leo

### A Circular Marketplace

By Justine Gallo, owner

Sun in Leo is a circular marketplace with up-cycled and responsibly sourced apparel and accessories. We source our products through secondhand stores, Facebook marketplace, and donations; really anything we can get our

hands on. We have timeless pieces as well as modern pieces and things that are completely transformed from what they once were. My motivation for this brand comes from the fact that everything on this earth already exists. There is clothing to dress you for 365 days a year and enough out there that your T-shirt could wear its own t-shirt. By having a circular marketplace I'm responsible for where my products are sourced, as well as where people can bring them when they are tired of them, and where textiles go when they are officially worn to death. By having one-of-a-kind pieces people are still able to get the rush of fast fashion because our merchandise is only there once.

We like to provide a shopping experience where you don't have to obsess over whether the store's products are sustainable, it just is! We host events such as our monthly clothing swap as a way to provide free clothing, vendor markets to showcase small local businesses, as well as ensuring every little detail of our business is looked at through a sustainable lens. We are striving for a circular business model through our 3R cycle. Repair, Reuse, and then Recycle.

**Repair: Bring us your favorite damaged pieces to be repaired instead of tossed. Just because it's broken doesn't mean it needs to be thrown away.**

**Reuse: Donate your unwanted jewelry and clothing to be up-cycled with us! There is more potential to your things than one season.**

**Recycle: For the pieces that cannot be reused we will collect and send out to organizations that recycle metals and textiles.**





We provide alterations services to adjust and repair clothing or jewelry you already have or we can alter pieces bought in store for free. In order to make our circular model successful we rely a lot on the community and their collaboration towards bettering the planet by shopping secondhand.

Website: [www.suninleo.shop](http://www.suninleo.shop)

Facebook & Instagram: @shopsuninleo

Address: 154 E Main St. Suite C, Kent, OH 44240

Store Hours: Monday - Saturday 12-8pm Sunday 12-6pm



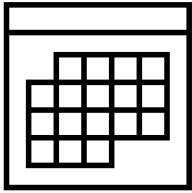
## **PARTA moves toward zero emissions**

By Denise Baba, Communications & Public Advocacy Advisor at PARTA

Renewable natural gas (RNG) began flowing to PARTA's Compressed Natural Gas (CNG) fueling station through a five (5) year contract with Clean Energy in early May. RNG, derived from organic waste such as cow manure, marks a significant shift towards cleaner transportation fuels. Unlike fossil fuels, RNG is not obtained through drilling and offers a more sustainable alternative for reducing carbon emissions.

As part of its commitment to achieving zero emissions operations by 2040, PARTA has moved to embrace RNG as a key component of its Zero Emissions Fleet Transition (ZEFT) plan. By turning to RNG to fuel its CNG-powered vehicles, PARTA is moving towards a greener future and actively working to reduce its carbon footprint.

With RNG now in the mix, PARTA is well on its way to achieving its ambitious goal of zero emissions operations by 2040. This milestone underscores the importance of innovative solutions in transitioning towards a cleaner more sustainable future for public transportation.



## CALENDAR & ITEMS OF INTEREST

Supporting our local businesses and organizations is a key component of Sustainability! Check out the City's Culture & Community section of the website ([www.kentohio.gov/culture-community/](http://www.kentohio.gov/culture-community/)) for more details about the following:

- **Haymaker Farmers' Market**
  - Open year-round, every Saturday morning in Kent: Held outdoors in downtown Kent on Franklin Ave. from April through October, 9am to 1pm, and indoors at the Unitarian Universalist Church of Kent – Hobbs Hall from November to March, 10am to 1pm. Visit [www.haymakermarket.com](http://www.haymakermarket.com) for full details.
  
- **Main Street Kent**
  - A non-profit organization that focuses on the promotion, beautification, and revitalization of downtown Kent. The City of Kent, Kent State University, local businesses, and community members support Main Street Kent. Check out their full calendar of events here: [www.mainstreetkent.org/events/full-calendar/](http://www.mainstreetkent.org/events/full-calendar/).
  
- **The Kent Area Chamber of Commerce**
  - Visit [www.kentbiz.com/events/eventcalendar](http://www.kentbiz.com/events/eventcalendar) for a full listing of Chamber and Community events.
  
- **Kent Historical Society & Museum**
  - Learn more about our community at Kent's primary history resource and reference center! Visit [www.kentohiohistory.org](http://www.kentohiohistory.org) for organization details and events.
  
- **Kent Parks and Recreation**
  - Offers a variety of locations, programs, and events for individuals and families to enjoy. They provide quality recreation and entertainment for the community through parks, sports, fitness, education and cultural arts. Visit their full program and event offerings at: [www.kentohio.gov/culture-community/kent-parks-and-recreation/](http://www.kentohio.gov/culture-community/kent-parks-and-recreation/)
  
- **Main Street Kent Clean Up Kent + Tulip Bulb Planting Day – 10/19/2024**
  - Meet up at the Gazebo downtown starting at 10am for the Fall Cleanup event. Main Street Kent will provide the gloves and trash bags to share, plus graffiti removal supplies. They will also be facilitating the planting of tulip bulbs during this event. Full details available at: [Clean Up Kent + Tulip Bulb Planting Day | Facebook](#)
  
- **Family Friendly Halloween – 10/25/2024**
  - Head downtown for a family-friendly trick-or-treat event at downtown businesses and the Hometown Bank Plaza from 5-7pm.
  
- **Climate Action Plan Energy Efficiency Open House – 10/30/2024**
  - The City will present about their recently completed facility energy audits, and additional information will be shared by the Community Action Council of Portage County about area energy

## Sustainable Kent News

and housing programs that can connect folks to efficiency and home repair related initiatives. After the presentations, there will be an opportunity for a Q&A, as well as the option to browse a variety of program materials. Kent Free Library's upstairs community room from 6-7pm.

- **Tree City Turkey Trot – 11/28/2024**

- A Family Event with a 5K Run/Walk and Fun Run/Walk Thanksgiving Morning - Thursday Nov. 28th, 2024. Fun Run/Walk starts at 9:00am. 5K Run/Walk starts at 9:15am. Finish / Award 10:15am. Full details available at: [Tree City Turkey Trot | City of Kent \(kentohio.gov\)](#)

- **Small Business Saturday – 11/30/2024**

- Support our local businesses for the holidays (and every day) by shopping locally. The Saturday after Thanksgiving is one of the biggest shopping days of the year, so join us in funneling the majority of that spending into our local economy. Downtown Kent has so much great shopping and if you can't find something for everyone on your list, you can get The Kent Card, an e-gift card that can be used at nearly 40 Kent businesses. Available year round, find The Kent Card at [Buy a The Kent Card Gift Card \(yiftee.com\)](#)

- **Holidays in Kent – December 2024**

- Holidays in Kent - We hope our community enjoys being home for the holidays, with so many great venues to host gatherings and shops to purchase gifts. Storefronts will be beautifully decorated and festive holiday lights will be up on trees and light posts, so invite the family to Kent this year for all of your holiday celebrations!

- **Snow Day – January 2025**

- Snow Day - We hope this event will become an annual tradition for Kent, as we had a blast partnering with the City of Kent to present the event to our community in January, 2024. Complete with live music, fire pits and s'mores, crafts and activities, we fully intend to bring this family-friendly event back in 2025. (Date TBA)

### **CITY OF KENT SUSTAINABILITY COMMISSION**

Meetings are held on the first Monday of every month at the Service Administration Complex (930 Overholt Road, Kent, OH 44240) from 5:30pm – 7pm and are open to the public.

Visit us on the web: [Sustainability Commission | City of Kent \(kentohio.gov\)](#)

Interested in joining the Sustainability Commission? There will be a vacancy on this board beginning in January 2025. Learn more about submitting an application on the Boards and Commissions page of the City's website: [Boards and Commissions | City of Kent \(kentohio.gov\)](#)