

KENT POLICE DEPARTMENT

301 SOUTH DEPEYSTER STREET KENT, OHIO 44240

330-673-7732

MICHELLE A. LEE

Chief of Police

TO: City Manager Dave Ruller

Mayor Jerry Fiala

Kent City Council

FROM: Chief Michelle A. Lee

SUBJECT: Kent Police Department 2018 Annual Report

DATE: February 15, 2019

On behalf of the members of the Kent Police Department, I am pleased to present you with the 2018 Annual Report. This report is intended to provide the Kent community with a greater insight of the programs, activities and accomplishments of their police department. The report also summarizes the crime and accident trends for Kent as well as clearance rates.

Reflecting back on last year I am pleased to report that the biggest impact on our department was the transition from our old police building to new. 2018 finalized a project that the city had been planning for beginning before the turn of the century in the mid 1990's. As a major impact on my office since 2012, finalizing construction in December of 2017 was a welcome conclusion to that year. Our initial move into the new building was completed in two stages with the administrative and detective bureau personnel first. We took advantage of occupying the building and being able to facilitate punch list items, furniture deliveries and information technology issues. The move did not come without drawbacks as we split our department personnel among two buildings, we had to work harder to ensure our services to the community did not suffer. I am pleased to report that only a handful of complaints were received and then addressed with minimal impact. In late summer the other divisions were able to make the transition to the new building. The entire transition was successful in spite of some challenges and I credit much of that to our personnel, our service department and Mr. Bishop who oversaw most of the information technology transitions. The new building involved over two decades of planning which produced a publicly recognized and environmentally designed beautiful building.

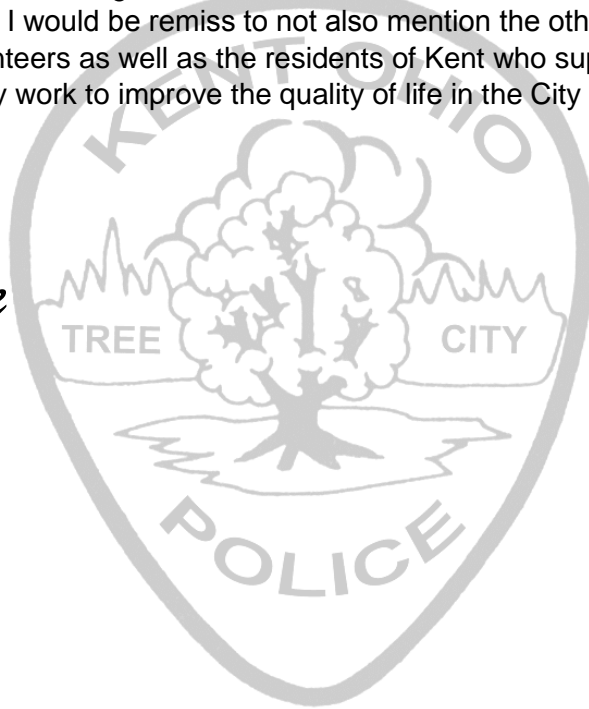
In reviewing our crime statistics, accident reports and police responses we again have experienced declines in calls for service, arrests and accidents from 2017. In comparing our 2018 statistics over the 10 year crime index large reductions were realized since 2009. This is a national trend that the law enforcement community has experienced now for over a decade. Locally, our department has responded to fewer neighborhood nuisance calls to include fights, assaults and property crimes. Spring and fall parties that used to plague our patrol division now have minimal impact on our operations. This is a welcome transition from the days when our city was well known for the tactical operations that necessitated mutual aid from other departments due to riots, large parties and other criminal activity.

In conclusion, I would like to congratulate all of our members for their hard work and dedication to the successes of 2018. I would be remiss to not also mention the other city departments, council's support, our many volunteers as well as the residents of Kent who support us in our programs and endeavors to continually work to improve the quality of life in the City of Kent.

Michelle Lee

Michelle A. Lee

Chief of Police



Kent

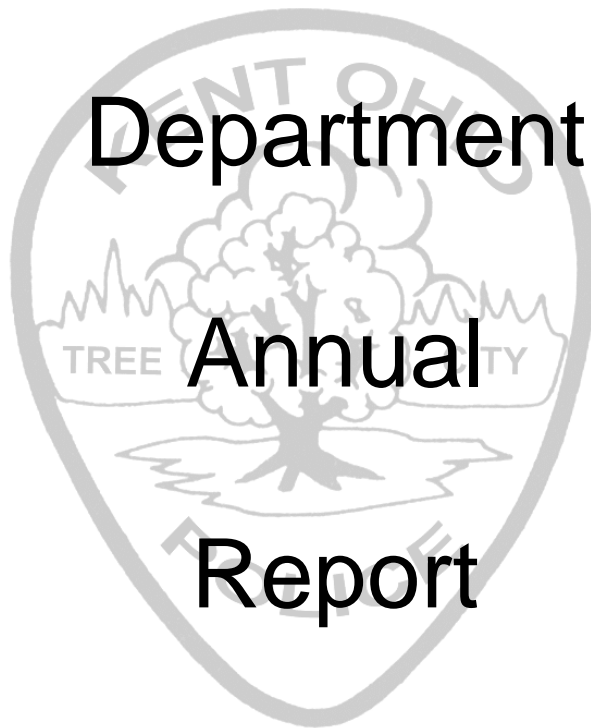
Police

Department

Annual

Report

2018



COMPILED BY ELIZABETH SADOWSKI

Table of Contents

ADMINISTRATION.....	1
DETECTIVE BUREAU.....	5
PATROL DIVISION.....	8
COMMUNICATIONS.....	12
SUPPORT SERVICES DIVISION.....	15
TRAINING SUMMARY.....	18
ACCOMPLISHMENTS AND PROGRAMS.....	21
KENT POLICE - KENT STATE UNIVERSITY PARTNERSHIPS.....	25
EMPLOYEE RECOGNITION.....	28
EMPLOYEE RECOGNITION.....	29
GENERAL OPERATIONAL DATA.....	30
TRAFFIC ACCIDENT TRENDS.....	31
CRIME TRENDS AND CLEARANCES.....	32
10 YEAR CRIME INDEX.....	33
ENFORCEMENT BY OFFICER.....	34
SHIFT ACTIVITY AND ACTION.....	35
TRAFFIC CITATIONS.....	36
CALLS FOR SERVICE.....	39
PARKING CITATION SUMMARY.....	42
PARKING CITATIONS.....	43
ADULT ARRESTS.....	45
JUVENILE ARRESTS.....	48
CRIME REPORTED TO FBI.....	49
ARSONS.....	50
LAW ENFORCEMENT OFFICERS KILLED OR ASSAULTED.....	51

Administration

The administrative division of the Kent Police Department consists of the Chief, the Assistant to the Police Chief, the Operations Captain, the Services Captain and the Administrative Lieutenant. The administrative team is responsible for external training approval and scheduling, the police budget of over \$7.6 million, policies and procedures, community policing programs, equipment purchase approval, personnel development and hiring, planning and researching initiatives, special projects, news media, social media, internship programs, and special events.

This year the administration and the Detective Bureau was responsible for first moving our offices from the old building into the new. This required the management of personnel, equipment, systems and some technology be divided among two separate buildings. It was imperative to maintain communications among all personnel during almost 7 months until the remainder of the department was moved. During the months of January through August we were responsible for managing continued “punch-list” projects needing completed in the new building.

CITIZENS POLICE ACADEMY

The 8th Citizens Police Academy was held in the spring and consisted of a 12-week course involving an array of law enforcement topics. Students were instructed in patrol tactics, investigation techniques, police equipment and participated in a ride-along to name a few. We had 25 Kent area residents participate in the program meant to educate and garner community relations and debunk common misperceptions about police work. This program was well-received and is slated for a 9th class in 2019. A grant through the Ohio Criminal Justice Services and was awarded a grant for \$16,600.00. With these funds we were able to purchase teaching aids, equipment, uniforms and class materials that will enhance the CPA experience for years to come.

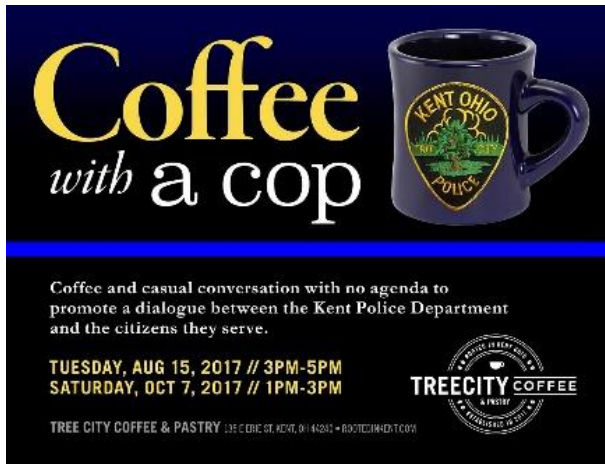


COFFEE WITH A COP



We partnered with Mike Beder and Tree City Coffee to launch “Coffee with a Cop.” Everyone in the community was welcomed to join in some casual conversation over a cup of coffee at the downtown coffee shop. These two events had no agenda other than to promote dialogue between Kent police officers and the citizens they serve.

KSU student Alex Johnson won the basket raffle at Coffee with a Cop.



LORD'S LUNCH



We have partnered with retired police officer, Ron Craig, and the Trinity Lutheran Church to co-host “Lord’s Lunch” twice yearly at the church. Police members and volunteers prepare lunch for those in need of a free meal on Saturdays. We plan to continue this program for years to come.

INTERNSHIP PROGRAM

The Kent Police Department recognizes and provides learning opportunities for persons studying in criminal justice and related fields through an internship program. Internships provide a valuable opportunity for qualified students to participate in the day-to-day functioning of a justice-related agency. Interns will observe police functions in a regulated and productive manner. In 2018 our interns were Kent State University student Sheena Hanley, who worked exclusively with Jeff Langstaff and Courtney Wilson who worked within the Records division.

SOCIAL MEDIA



We have a growing presence on Facebook, breaking the 10,000 friends mark this year. Much of the credit goes to Clerk/Dispatcher Schneider who manages most of our social media sites. We are on Instagram in an attempt to keep pace and connect with our younger followers at kentpd_ohio and on Twitter @Kent_Ohio_Police.

GREEK FIRE & POLICE ACADEMY

Administrative Lt. Lewis assists the Fire Department with this event annually in an effort to educate Kent State fraternities and sororities about the services provided by Police and Fire. Additionally, the students have the chance to learn safety measures they can implement and also how to communicate appropriately and effectively with officers.



Detective Bureau

The members assigned to the Detective Bureau investigate felony and misdemeanor cases and will respond to calls to assist the patrol division. Most cases originate with the Patrol Division and are forwarded to the detective bureau for additional investigation. A Lieutenant and Sergeant command a team consisting of three general case investigators, one drug task force agent, one juvenile investigator, one evidence officer and a civilian juvenile counselor.

PORTAGE COUNTY DRUG TASK FORCE

In 2018, Kent PD detectives worked with and collaborated with multiple county, state and federal agencies. Most frequently they work closely with the Portage County Drug Task Force in which we have a detective dedicated to full-time. Kent, Ravenna, Aurora, Streetsboro, PCSO and the Prosecutor's Office participate in the task force. The Task Force has been so successful that they were able to provide our department with a new vehicle purchased with forfeited money.



The PCDTF participates in a program titled ODMAP. ODMAP is an acronym for Overdose Detection Mapping Application Program that uses a web service accessible through a smart phone or computer to allow first responders to report fatal and non-fatal overdose incidents. This information is transmitted to a secure map server and plotted on an electronic map. The map allows participating agencies to visualize overdose incidents in and around their jurisdictions. ODMAP filters this information and gives participating agencies the ability to identify overdose spikes and assists in identifying drug users, associates and peddlers.

PROPERTY/EVIDENCE ROOM

The purpose of the Property/Evidence room is to provide proper collection, preservation, storage and disposition of evidence and other property. With our new building, we expanded from 500 sq. /ft. of space to over 3000 sq. /ft. Evidence is maintained only as long as necessary for use in any pending investigation or prosecution, and non-evidentiary property is maintained only until it can be returned to its rightful owner or otherwise disposed of in accordance with the law. The



Property Room is managed by a full-time detective who also devotes his time to managing video evidence. A property managing system software, "The Beast", was purchased in 2017 to reduce error in managing evidence. In 2018, 1,774 items were logged into evidence.

INTELLIGENCE LIAISON OFFICER/HOMELAND SECURITY

Ohio Homeland Security has adopted the ILO Program that establishes a baseline intelligence capability throughout the State, utilizing existing law enforcement resources. The ILO serves as our county-wide point of contact for terrorism- related information and intelligence. The ILO serves as a liaison to all other law enforcement, Fire and EMS in providing information and guidance to local officials and acts as the Point of Contact (POC) for homeland security information. We have one officer dedicated to this program part-time. Our officer attended quarterly meetings for training updates on the topics of Human Trafficking, Violent Extremists Targeting Law Enforcement Officers, and other emerging trends. Our officer has initiated several investigations related to suspicious activity in the City of Kent and addressed several "See Something Say Something" tips from the citizens of Kent. Our Officer continues to gather and disseminating intelligence to the State of Ohio fusion center. Our TLO also had the opportunity to teach the Citizen Police Academy. During this opportunity several community members were trained on the concept of "See Something Say Something."



OTHER TASK FORCES/PROGRAMS

There are a variety of other efforts that our detectives are involved in to better serve the Kent community. One of our juvenile detectives participates with MDT (Multi-Disciplinary Team) which reviews child abuse cases in the county to assist the victims, hone court preparations and share information on violators in the county. We also participate in SART (Sexual Assault Response Team) with Kent State University that reviews cases for victim advocacy. One of our general investigators participates in the Portage County Elder Care Task Force which reviews cases and services targeting the aged population.

JUVENILE DIVERSION PROGRAM

Under the direction of the Juvenile Counselor, the Diversion Program in 2018 processed 22 juveniles through the program. The program provides first time offenders with an alternative process from entering the county's juvenile justice system for a non-serious criminal offense.

The Juvenile Unit Diversion Program included the following activities in 2018:



182	Mediation/ Problem-Solving Contacts
27	Drug/ Alcohol Interventions
2	Parental/ Family Consultation
1	Juvenile providing community service through the Diversion program. Community service averages 16-18 hours per juvenile.
15	Child/ Adolescent Mental Health Interventions
110	Adult Mental Health Interventions
2	Public Speaking Engagements

Patrol Division

The patrol division encompasses all three uniformed shifts and is commanded by the Operations Captain. Each shift is led by a Lieutenant and Sergeant with approximately 7 to 8 officers per shift. In addition to the three uniformed shifts, we also staff overlap shift positions to provide police coverage during shift changes. The uniformed patrol division officers are the first representatives of the City of Kent to respond to citizen requests for service, initial crime scene investigations, traffic enforcement, traffic accident investigations, community policing initiatives and proactive criminal investigations.



The police department hired 3 new officers in 2018. The officers all were hired with their basic academy certifications and two of those officers had prior experience. Currently, all of these officers

have completed their field training and are assigned to various shifts. There is currently one vacant officer position that has yet to be filled.

Our patrol division separates the city into “areas” of assignment designated as North, South, East and West. An officer on each shift is assigned to these areas as their primary responsibility for the year. This designation is a community policing philosophy prompting officers to inherently learn and take responsibility of the specific dynamics of their area of assignment. This philosophy has been ingrained in our culture for over two decades.

K-9 PROGRAM



The K-9 program greatly enhances uniformed patrol in the detection and apprehension of criminal offenders, locating missing persons and children, and provides better safety for officers in physical confrontations and dangerous situations. We currently have two allocated K-9 positions within the patrol division. K-9 teams are

dedicated full time to the program as the dogs are housed and cared for by the handlers 24 hours a day. In January 2018 Sgt. Ennemoser retired K-9 Aiko after 8 years of dedicated service. We were fortunate to retain Sgt. Ennemoser as our K-9 Administrator. In April our new K-9 handler, Ptl. Smith, became certified after 6 weeks of training with his new partner Janik. Together they logged 134 deployments. Ptl. Poe and K-9 Iron logged 42 deployments and made 12 arrests. The K-9 program has been a useful enforcement tool but is also popular within the community and supports many community policing programs.



NORTHERN OHIO VIOLENT FUGITIVE TASK FORCE (NOVFTF)



Under the direction of the U. S. Marshal's Office, this multi-jurisdictional agency, represented by federal, state and local law enforcement agencies, search for and apprehend dangerous felons and fugitives who are located in the jurisdictions of the participating agencies. Two officers are assigned part-time to this organization which has been instrumental in the apprehension of Kent area fugitives.

Collectively, our two dedicated officers worked 328 operational hours with the Marshal's Task Force. Our officers were involved with searching for 208 subjects in 407 locations resulting in making 103 arrests, 5 of those were KPD warrants. In addition to the tactical operations, officers participated in 16 hours

METRO SWAT



This highly trained, professional multi-jurisdictional special weapons team responds to incidents within the jurisdictions of participating members that require special weapons and tactics to deal with riotous activity, large crowd control, barricaded suspects, and execution of drug warrants, arrest of dangerous felons, and the rescue of hostages or endangered persons. The organization is comprised of 19 Summit/ Portage County law enforcement agencies. The Kent community needed the assistance of Metro SWAT on one occasion in 2018 during Kent's Halloween event. The Kent police have three highly skilled members that participated on the team.

TRAFFIC SAFETY CAMPAIGNS

Our patrol division is dedicated to traffic safety and reducing vehicular accidents. Annually we are involved in safety campaigns such as Click it or Ticket, Drive Sober or Get Pulled Over and None for Under 21. We have also partnered up with the Portage County Health District which funds "Safe Communities". This is a county collaborative targeting traffic safety efforts through awareness and education.



GRILL FOR GOOD



In June we participated in this charitable special event. D/C Butcher had the food donated from family members and prepped it all on her own time while Chef Kunka did most of the grilling. Many other members also assisted during the day by taking and filling orders.

SCHOOL RESOURCE OFFICER

We have partnered with the Kent City Schools since 2014 to provide a seasoned police officer to work in the High and Middle school on a full-time basis during school hours. SRO Ptl. Butcher has been instrumental in providing security, instilling trust and guidance to faculty, administration and students. He



was especially effective this spring when a student walk-out/protest for school violence occurred during school hours.

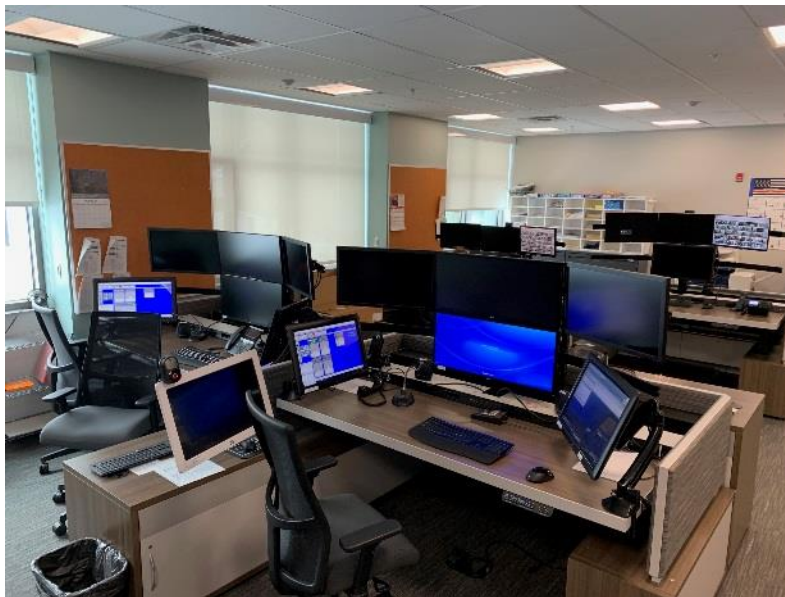
BICYCLE PATROL



The bicycle patrol continues to be a tool used in community policing efforts and in crime prevention. There are currently 15 Officers trained in the utilization of the Police Bicycle and are encouraged to ride bicycles when staffing allows and are often an assigned position in community and special events.

Communications

The Kent Police Department Dispatch Center handles all radio traffic for both the Kent Police Department and the Kent Fire Department and all telephone traffic for the Kent Police Department twenty-four hours a day and seven days a week. The Dispatchers are responsible for inputting all calls for service into a computer aided dispatching system and are also responsible for paging out the Portage County Water Rescue, Urban Search and Rescue, HAZMAT, and Fire Investigative Unit teams. All Dispatchers are certified in Emergency Medical Dispatch and are able to provide instructions over the phone during medical emergencies.



Staffing for the Dispatch Center in 2018 consisted of 10 Full-Time Dispatchers (One assigned to Records) and one Part-Time Dispatcher. An additional Part-Time Dispatcher was hired in November and is still currently in training. A proposal for Full-Time positions and a Full-Time Records Clerk was approved in December and we hope to be fully staffed by summer of 2019 with eleven Full Time Dispatchers, one Full Time Records Clerk, and one Dispatch Coordinator.

In 2018, the Dispatch Center handled over 250,000 phone calls, including non-emergency and Emergency 911 calls, and over 225,000 radio transmissions.

The Dispatch Record Clerk is usually the first person to greet visitors needing reports or assistance when they enter the Police Department lobby. Our Records Clerk is very knowledgeable about the City, Police operations and

policies, and current records laws. She processes and inputs all information from arrests and officer written reports and processes all public records requests. She was responsible for completing and providing over 1400 records research and back ground checks in 2018.

DISCOVER DOWNTOWN



For several years, our dispatchers have taken on the opportunity to represent our department at the Annual Discover Downtown event. Dispatchers organize a raffle basket and table giveaways as well as informational items that lure new Kent State University students to our table. This is a great way to meet new students, educate them on police response and protocols as well as introduce them to their first responders.

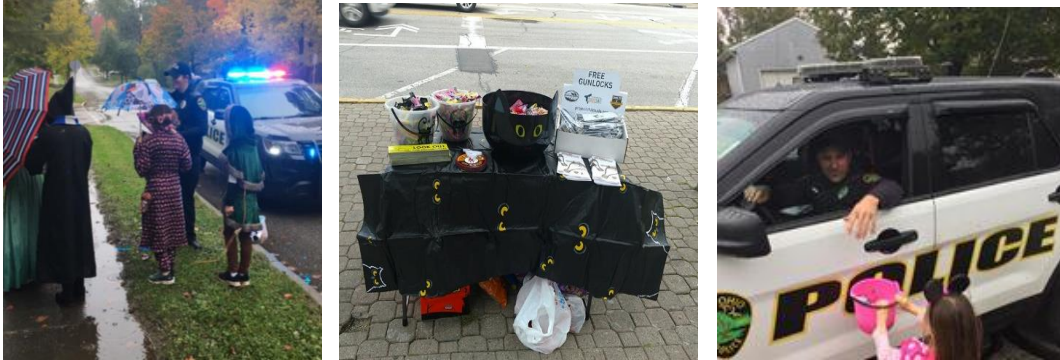
TREE DECORATIONS AND MR. JINGLES

During the holidays C/D Schneider and Bower respectively spearhead tree decorations within our new building and Mr. Jingle's presence on our Facebook page. Kent student were encouraged to make an ornament to decorate our two Holiday Trees within our lobbies which prompted an outpouring of decorations by elementary school kids. Mr. Jingles was also an ever-present figure and great community policing tool within our social media efforts.



FAMILY FRIENDLY HALLOWEEN

Our dispatchers take this opportunity for community outreach by organizing candy donations for dispatchers and officers to pass out to children at the downtown event as well as in the neighborhoods during trick-or-treat.



SAFETY SCHOOL

The Dispatchers participate in the Kent Junior Mothers Safety School for incoming kindergarteners. Along with Police Officers and Firemen, Dispatcher Brown helped educate the children about stranger danger, fire safety, when to call 9-1-1 and what to tell the dispatcher if there is an emergency.



Support Services Division

Support services is divided into two separate functions both equally important to the operations of the Kent Police Department of Compliance Officers and Detention Officers.

Compliance Officers - The department employs two full-time civilian positions who are responsible for both parking and animal compliance. The two officers are cross trained and share equal responsibility for the workload in any given day. While assigned to parking compliance, the officers will respond to any parking complaints and patrol neighborhoods for parking violations utilizing a marked police Jeep Wrangler. The majority of their shift is spent in the downtown area where metered parking is prominent. Officers will enforce and ticket metered parking violations, monitor meters for maintenance issues and collect coin from the meters. The city has invested in an electronic ticketing system that can photograph the violation, issue paper citations and track the violations for collection. The ticketing system is part of the overall metered parking software program which is managed by the Community Development Department.



Animal complaints are handled by Compliance Officers when they are on duty utilizing a marked police pick-up truck equipped with a truck bed kennel. Lost and found pets, dog bite complaints, dogs running-at-large, feral

cats and abandoned pets are a few of the persistent issues the officers handle weekly. The City of Kent is fortunate to maintain our own kennel located at 1220 Mogadore Rd. The kennel has three secure indoor/outdoor runs, heating, lighting, running water and sanitary drainage. The kennel can accommodate up to 6 dogs at any given time. In 2018, 75 dogs were impounded, 58 were returned to their owner, 10 were adopted back into the community and only 5 were taken to the county dog pound. In 2018, \$755 was collected in kennel fees. Our animal compliance officers also respond to cat complaints. This year we impounded 31 cats and transported 36 cats, at a cost of \$40 per cat, to the A.P.L. at an annual cost of \$1,440.00. Our Compliance Officers manage an adoption process to keep animals from being euthanized. Using social media and many other pet-friendly agencies, they are very successful in adopting



out most lost and abandoned dogs. To assist them in this endeavor they have the ability to “chip” dogs so they may always be able to find their way back home if lost.

In March, the Kent Roosevelt High School D.E.C.A. program generously awarded us \$500.00 towards caring for lost and abandoned animals. We were able to purchase dog treats, toys, leashes and a mini microchip ID system all to support our adoption program.

Detention Officers – The Kent Police Department employs 6 part-time detention officers with over 50 years of combined service and experience. They are responsible for prisoner processing and to maintain and clean our 12 – Day jail facility which is how it is categorized under the State of Ohio’s Bureau of Adult Detention. Our jail facility has its own entrance and lobby to serve the public’s needs. It is also equipped with areas for visitation, attorney/client counseling, a chaplain’s office, interview room, and a pantry for food preparation, laundry, medical room, temporary holding rooms, employee restroom, storage area and a B.A.C. (blood alcohol content) testing area. We operate a 12 Day jail facility consisting of 4 temporary holding cells that could hold up to 12 prisoners and permanent holding cells divided among two pods that could house 12 prisoners up to 12 days. The two pods, meant to separate females and males, offer showers, TV, tables/chairs and telephone all of which are required by state of Ohio standards. Longer term holding has single, double and triple occupant beds complete with toilets and sinks. A booking area for paperwork processing is located centrally in a large open space where detention officers are equipped with jail controls of doors and audio/video surveillance.



Detention Officers often find themselves working with intoxicated, combative, disgruntled or in drug induced states. Our Detention Officers must be skilled in handling these types of individuals in order to protect themselves and others from potential assault and harm.

Our detention officers are scheduled to man our jail during peak times and days which are Mondays through Fridays 6 pm to 8 am and 24 hours Saturdays and Sundays. Detention officers can also be called in when activity requires prisoner processing. The new jail opened and booked its first prisoner on the same day on August 4th. From August 4th to Dec. 31st we processed 461 prisoners.

All new Detention Officer must receive 120 hours of correction training through the Ohio Police Officer Training Academy and pass a state certifying test. They are then trained through our own training program before working independently.

Training Summary

Training is an integral part of establishing high professional standards within all organizations. The Kent Police Department is committed to providing the highest level of training, within financial constraints, for all components of the organization. This commitment is accomplished by using internal (in-service) and external training resources to provide advanced training, career development opportunities, and specialized training related to new law enforcement technology.

In-Service Training:

In-Service training was provided to all members of the department throughout the year. Much of this training was conducted through daily Roll Call training. Areas of Roll Call training include: review of department rules, policies, procedures; changes in state law and local ordinances; court rulings and decisions; community policing techniques; homeland security; officer survival; investigation techniques; firearm related issues; crime prevention concepts; and many other job-related subjects.

- In 2018, Kent PD provided 40 hours of specialized training for every sworn police officer. These training sessions were presented by state certified staff and department members in subject matters related to their fields of expertise.

The 2018 in-service training included:

- Firearm training and certification for side arms, shotguns and patrol rifles.
- Solo Response to Active Threat Training
- Use of Force, Case Law & Defensive Tactics
- Taser training and recertification
- Various Legal Updates
- Less-than-lethal weapon training, use of force decision-making and documentation.
- Breath alcohol testing certification
- CPR & First Aid

External Training:

External or outside training needs are met by sending personnel to specialized training academies, seminars, and workshops. These resources

include both the private and public sector. Training needs are reviewed and determined for all components of the organization. The primary components are: administration, supervision/ management, investigations, records & dispatch, and patrol. The following courses represent specialized training members attended outside of the Department.

ADMINISTRATION: ALICE Instructor Recertification 2, Management Rights, News Media Public Information Officer Training, Ohio Traffic Stop Data Collection: Preparing for 2020, Representation During Law Enforcement Administrative Interviews, Summit County Cyber-Crime Investigations Training, Updating PowerPoint Skills, Winning Back Your Community: Improving Public Perception, Workplace Conduct & Management Practices,

SUPERVISION & MANAGEMENT: 2018 Jail Administrator's Conference, Advanced Building Clearing (ABC), Building Search Instructor, Death Investigation, Excel for Public Safety, Explosive Handlers and Breaching Course, First Responder's Role in Barricade Hostage or Suicide, High –Risk Room Entry, Homemade Explosives, Individual Counsel Training/Critical Incident Stress Management, , Internal Investigations Functions, Officer-Involved Shooting, OPBA Director Training Seminar, OTOA Advanced Team Tactics, OTOA Conference, Officer-Involved-Shooting Review & Critical Incident Debrief, Patrol Rifle Problem Solver, Performance Leadership, Scenario Based Training Instructor, Skill Based Amusement Machine Legal Update, Supervisor/Team Leader Training, The Supervisor's Role During and After Pursuits

INVESTIGATIONS: Active Shooter: Phases & Prevention Course, A Dangerous Defense: "Blackout" in Alcohol Sexual Assaults, BCI High Risk Youth Initiative, Bloodstain Analysis Workshop, Cellular Analysis Survey Team (CAST), Childhood Development 101, Corroborating Evidence and Case Review Webinar, Credit Card Fraud, Criminal Investigations Using Cellular Technologies, De-escalation and Minimizing Use of Force, Exploring the Sexual Offender and Physical Abuser, From Crime Scene to Courtroom, Human Trafficking Training, Latent Print Suitability Workshop, Mobile Forensics Cellebrite and Physical Analysis, OIAO Educational Conference, Sexual Assault Kit-Cold Case Investigations, Skill Based Amusement Machine Legal Update, Understanding Digital Footprints,

RECORDS, DISPATCH, CIVILIAN PERSONNEL: Active Shooter Investigations, Assisting Individuals in Crisis, ATAC, Awareness of Cultural Diversity, CIT for Dispatch, Absenteeism Control and Tracking, Animal Cruelty and Fighting Investigations, Criminal Justice Information System

Security and Awareness Training, Corrections Academy, CPR, Emergency Medical Dispatch Recertification, Jail Basics, Management Rights, NLETS and NCIC Training, Post Critical Incident Seminar, Rethinking the Cat, Telecommunications Best Practices for Missing and Abducted Children, Workplace Conduct and Management Practices

PATROL: 2018 Ohio Jail Administrator's Conference, Active Shooter: Phases and Prevention Course # ACTS104, Advanced Building Clearing (ABC), ALICE Instructor Recertification 2, ARIDE, Arrest Search & Seizure, BAC Datamaster, BCI High Risk Youth Initiative, Bloodstain Analysis Workshop, Bloodstain Analysis Workshop, Building Search Instructor, Childhood Development 101, Combat Marksmanship Skills, Companion Animal Encounters, Counter Ambush Tactics for Law Enforcement, Credit Card Fraud, Crime Scene, Criminal Patrol/Interdiction Baseline Training, Crisis Intervention Team, Death Investigation, De-Escalation and Minimizing Use of Force, Excel for Public Safety, Exploring the Sexual Offender & Physical Abuser, Explosive Handlers and Breaching Course, Female Officer Patrol Rifle, Field Training Officer, First Responder Autism Training, From Crime Scene to Court Room, High Risk Room Entry, Homemade Explosives, Human Trafficking Training, Individual Counseling Training (CISM), Internal Investigations Functions, Internet Investigations I, Latent Print Suitability Workshop, LE Firearms Requalification Program Instructor, LEADS Inquiry Test, Legal Update Training Workshop, Metro SWAT Patrol Rifle, NAPCH 2018, National Security and Safety Solutions Summit, Officer-Involved Shooting, OHLEG Security Training, OHLEG Security Training, OIOA Educational Conference, OPBA Director Training Seminar, Patrol Rifle Problem Solver, Performance Leadership, Photography for Investigators, Read-Recognize-Respond, Remington 870 Shotgun Armorer, Representation During LE Administrative Interviews, Road Wise, Scenario Based Training Instructor, Sexual Assault Kit-Cold Case Investigations, Sexual Assault Kit-Cold Case Investigations, Sexual Violence in Cyberspace Part 1, Skill Based Amusement Machine Legal Update, Smith & Wesson Armorer's Course, Subject Control Operator-Ground Defense, Subject Control Operator-Ground Defense, Summit County Cybercrime Investigations Training, Supervisor/Team Leader Training, Taser X26P User, Undercover Online Investigations, Understanding Digital Footprints, Updating PowerPoint Skills, Use of Force: Liability and Standards, Winning Back Your Community: Improving the Public Perception, Workplace Conduct and Management Practices, Workplace Conduct and Management Practices

Accomplishments and Programs

The NEW Kent Police Department!

Moving into our brand new facility allowed us the opportunity to host many new events and better serve our community. This included hosting the Citizens Police Academy, the Red Cross Blood Drive, the children's Holiday Tree, community open houses & tours, KPD employment recruiting events, various training classes and more.



KPCA

The KPCA is a non-profit organization whose mission is to enrich the Kent area community through police support. Numerous gifts and donations were given to various organizations and other fund raising events throughout the year to benefit the Kent community. Annually, a scholarship of \$1,000.00 is awarded to a deserving RHS graduating senior who is involved in their community. This year's award winner was Tyler Grattan!



Photo: Tyler Grattan and School Resource Officer Matt Butcher



KPCA, in partnership with Walgreen's, conducted a prosperous "Fill-A-Cruiser" program to benefit local needy families. Multiple families and children were provided gifts and food. KPCA also sponsored "Bowl against Abuse" through the Children's Advocacy Center.

PRESENTATIONS, DISCUSSION AND DEMONSTRATIONS

The department is active in seeking out opportunities to interact with many community groups on a variety of topics, below are a few examples:

- New PD Open House Tours
- Multiple Journalism Classes KSU
- KSU Greek Affairs, Interfraternity Council and Panhellenic Council
- Annual Greek Fire Academy
- Kent State Bowman Breakfast
- KSU Career Expo
- University of Akron Career Expo
- Mount Union Career Fair
- Maplebrook at Golden Pond Safety Talk
- Gables of Kent Ridge Safety Talk
- Hometown Bank and Key Bank
- Kentway Apartments Safety Talk
- Ohio Town & Gown Conference at Bowling Green University
- Kent State International Students, Laws and Driving Presentation
- Multiple presentations requested by PMHA in area housing complexes
- KSU Criminal Justice classes, Police Role and Intro to Criminal Justice
- Safety talks at individual fraternities & sororities
- Kent State Baseball Team
- Dustin's Deputies
- KSU Fraternity & Sorority Presidents
- A.L.I.C.E. presentations
- Kent Interfaith Alliance
- Annual Click It or Ticket Campaign Kickoff

Movember 2018 & the Susan K. Graves Memorial Fund 2018



Kent PD employees participated in Movember for the 7thth consecutive year, raising money and awareness for prostate cancer, testicular cancer and mental illness. Officers were permitted to grow facial hair for the entire month of November and raise money for the cause. An additional donation by officers allowed them to keep the facial hair through December as well. This year's local recipient was Guy Alexander who is fighting leukemia.

2018 KPD Officer Susan K. Graves Memorial Fund, which has an in-house bake sale and raffle to raise money each October, along with Movember raised \$3,800 for local cancer patients. This year's recipient was Jaclyn Shaw.



American Red Cross Blood Drive

For the first time, the Kent Police Department partnered with the American Red Cross for blood donations on the day before Thanksgiving and it was a great success! Thank you, and everyone involved for all of their help to make it such a success. We are planning on three separate dates to host in 2019. The results from our blood drive is below:

- 37 presenting donors
- There were only 3 deferrals
- We collected 36 productive pints on a goal of 35! (4 total pints collected from 2 presenting Power Red donors)
- For an overall drive efficiency of 102.9%!



 American Red Cross
BATTLE OF THE BADGES
Respond to the call. Give blood.

Blood Drive
Kent Police Department

Community Room
301 S Depeyster St
Kent, OH 44240

Wednesday, November 21, 2018
11:00 AM to 5:00 PM

PHARMACEUTICAL DRUG COLLECTION BOX

This program was begun late 2012 in cooperation from a grant through the Portage County Solid Waste Management (who provided the box) and after application and permission from the DEA (Drug Enforcement Agency). The program is designed to provide a collection box for the Kent community to easily dispose of unwanted or expired medication for safe disposal. A collection box is located at our parking lot for easy drop off. The program is managed by detective bureau personnel. In 2018, 360 pounds of pills were collected, along with other miscellaneous medications, anonymously to the collection box.



PARTY REGISTRATION PROGRAM

2018 proved to be a successful year with our Party Registration Program. The program allows party hosts and attendees have the opportunity to receive a telephone warning from our dispatch center in the case of excessive noise or other nuisance activities. We had 70 registrants take advantage of this program from numerous addresses.

KENT POLICE - KENT STATE UNIVERSITY PARTNERSHIPS

The Kent Police and the Kent State University enjoy a cooperative working relationship which has proven to be mutually beneficial. Although this relationship has always existed, new initiatives and joint ventures are always investigated to improve the quality of service to the Kent and Kent State University communities.

Special Events - There are some special events that necessitates KSU PD's cooperation to ensure a safe and tactically sound operation. The end of KSU's spring semester sparks many college age residential area events such as "*Fake Patty's Day*" and end of the year parties. These unsanctioned block parties are advertised and attended by college age participants that often result in high activity. We also worked in cooperation with Kent State Police during an "Open Carry" rally on campus. Halloween has also proven to be an unsanctioned event that continues to swell and sprawl within the city. We have received continued support from KSUPD when planning and staffing our police response.

Other special events include sanctioned parades and road races that involve dual areas of responsibility and jurisdiction. Many of these events cater to the Kent State student population such as the *Homecoming Parade*, and the *Bowman Cup 5K Race*.

City of Kent and Kent State University Community Meetings - Police



Administrators contribute to these Town & Gown meetings which are held monthly. These meetings involving KSU and Kent City administrators are meant to ensure cooperative working relationships and to maintain and improve town and gown relationships. In 2018, Kent PD Lt. Mike Lewis and Kent State Assistant Dean Todd Kamenash presented together at the Ohio Town & Gown Conference at Bowling Green University.

C.A.D. AND R.M.S. (Computer Aided Dispatch and Records Management System)

KPD and KSUPD collaborate in several ways in the areas of communications infrastructure, dispatch services and records management. For over thirty years, both departments have dispatched police services on a shared VHF radio frequency. This year we transitioned to the MARC radio system. This is an 800mhz interoperable platform shared with other county agencies and maintained by Portage County EMA. Kent PD also dispatches Kent FD for fire and EMS services on campus as well. Since 2006, Kent PD has also shared KSU PD's computer-aided dispatch and records management

platforms as well. This shared software platform allows officers from both departments instant access to the activity and databases of the other department via their dispatch centers, and desktop and vehicle mounted computers. The shared platform also allows either dispatch center to serve as a



fully capable emergency backup for the other, should one suffer a catastrophic failure or natural disaster. These two shared systems have promoted further collaborations which include KSUPD monitoring burglar and fire alarm systems citywide via their certified central station, and a current effort toward a common set of standardized training and certification programs.

Kent Police Department Dispatch is in its 3rd year of Emergency Medical Dispatch. This EMD program is run through the Association of Public-Safety Communications Officials (APCO) and includes intensive and on-going training for all dispatchers. APCO's EMD certification means the Kent PD Dispatchers have achieved one of the highest levels of training in the profession. This comprehensive program helps augment the already high level of service provided to the Kent community and surrounding areas.

The EMD program, based on guide cards and software, is a systematic way to manage emergency medical service resources in an organized and effective manner and to provide medical assistance to callers, when needed, until medically trained field response units arrive at the scene. These instructions includes step by step instructions for CPR, obstructed airway, and childbirth calls.

COMMUNITY COLLABORATIONS

In 2018, Kent PD and Kent State PD teamed up for a safety campaign to discourage texting while driving and texting while walking. Working with AAA, Safe Communities and local business partners such as Tree City Coffee, Starbucks, and Dunkin Donuts, police rewarded those who were seen practicing safety by paying attention to their surroundings by putting their cell phones down while driving and crossing the roadways. Thank you to all those who helped.



EMPLOYEE RECOGNITION

SUPERVISOR OF THE YEAR

Lt. George Wheeler

OFFICER OF THE YEAR

Det. David Marino

CIVILIAN OF THE YEAR

D/C Alison Butcher

ENFORCEMENT OFFICER OF THE YEAR

Ptl. Mitchell Smith

OVI OFFICER OF THE YEAR

Ptl. Michael Carnahan

FITNESS EXCELLENCE

Sgt. Ryan Gaydosh
Ptl. Benjamin Darrah
Ptl. Matthew Brooks
Ptl. Drake Oldham
Ptl. Lee Allen

FIREARMS TOP SHOT

Ptl. Neal Hilbruner

FIREARM EXCELLENCE

Ptl. Neal Hilbruner
Lt. George Wheeler
Sgt. Ryan Gaydosh
Ptl. Dominic Poe

PERFECT WORK ATTENDANCE

Lt. Robert Treharn
Det. Norm Jacobs
Det. Michael Domer
Ptl. John Gormsen
Ptl. James Fuller
Ptl. Matthew Brooks
Ptl. Samantha Burton
C/D Nichole Jacobs
C/D Rebecca Schneider
C/O Ronald Gardner

EMPLOYEE RECOGNITION

40 YEAR SERVICE AWARD

J/C Jeffry Langstaff

20 YEAR SERVICE RIBBON

Sgt. Richard Soika

15 YEAR SERVICE RIBBON

C/D Rebecca Schneider

10 YEAR SERVICE RIBBON

Capt. Nicholas Shearer

Det. David Marino

Ptl. Nicole Watkins

5 YEAR SERVICE AWARD

Ptl. Neal Hilbruner

Ptl. Kyle Auckland

NEW FULL TIME HIRES

Ptl. Matthew Noah

Ptl. Alec Womack

Ptl. Samantha McNulty

NEW PART TIME HIRES

D/O Jennifer McInay

D/O Louis Lawson

C/D Michelle Haas

RESIGNATIONS

Capt. James Cole

General Operational Data

	<u>2017</u>	<u>2018</u>	<u>% (+/-)</u>
Personnel Employed	60	64	6.25%
Calls for Service	25701	25069	-2.52%
Fire Department Calls	4353	4680	6.99%
Ambulance Calls	3421	3799	9.95%
Fire Calls	912	870	-4.83%
Voided Run Numbers	20	11	-81.82%
Arrests, Total	1878	1605	-17.01%
Juvenile Arrests	137	90	-52.22%
OVI Arrests	164	145	-13.10%
Traffic Citations	2872	2869	-0.10%
Parking Tickets	12751	11733	-8.68%

Traffic Accident Trends

	<u>2015</u>	<u>2016</u>	<u>2017</u>	<u>2018</u>
Total Accident Complaints	1067	1015	753	705
Property Damage Accidents	739	673	422	405
Injury Accidents	104	114	96	105
Private Property Accidents	169	160	173	147
Hit-Skip Accidents	52	44	41	36
OVI Related Accidents	21	17	12	10
Pedestrian Accidents	10	11	9	10
Pedestrian Fatalities	0	0	0	0
Fatal Accidents	0	0	0	0

Crime Trends and Clearances

	<u>2017</u>	<u>2018</u>	<u>TREND</u>	<u>CLEARED</u>	<u>% CLEARED</u>
Criminal Homicide	0	0	0.00%	0	100.00%
Rape	1	3	200.00%	0	0.00%
Robbery	11	9	-18.18%	4	36.36%
Assault, Total	190	162	-14.74%	133	70.00%
Aggravated	32	24	-25.00%	19	59.38%
Simple	158	138	-12.66%	115	72.78%
Burglary	72	79	9.72%	17	23.61%
Larceny	359	330	-8.08%	42	11.70%
Auto Theft	17	12	-29.41%	0	0.00%
Arson	1	3	200.00%	2	200.00%
Human Trafficking, Commercial Sex Acts	0	0	0.00%	0	100.00%
Human Trafficking, Involuntary Servitude	0	0	0.00%	0	100.00%
Total	651	598	-8.14%	198	30.41%

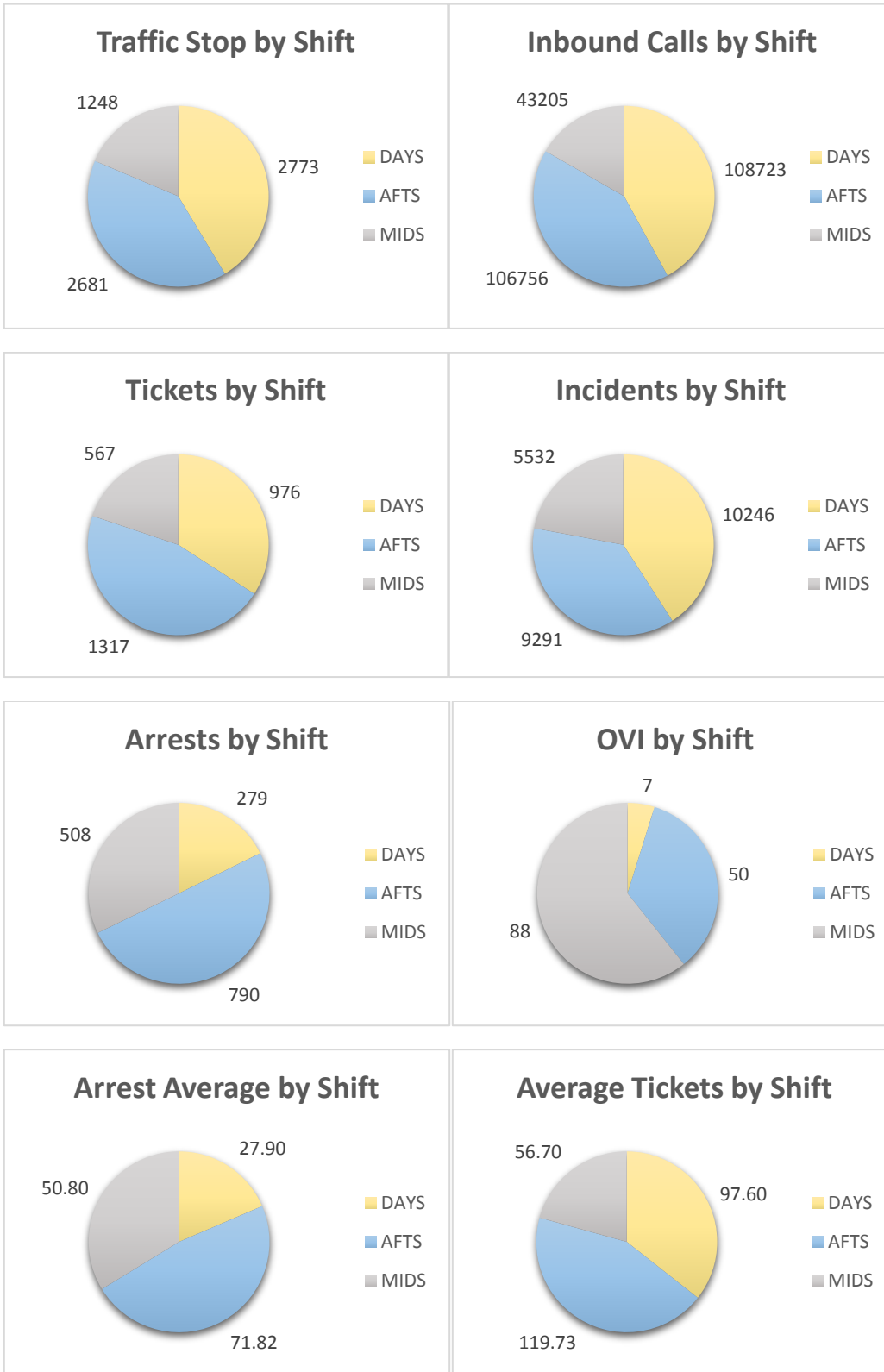
10 Year Crime Index

	<u>2009</u>	<u>2010</u>	<u>2011</u>	<u>2012</u>	<u>2013</u>	<u>2014</u>	<u>2015</u>	<u>2016</u>	<u>2017</u>	<u>2018</u>
Murder	1	1	2	1	1	0	1	1	0	0
Rape	12	8	6	7	5	2	2	0	1	3
Robbery	15	9	17	18	24	15	9	13	11	9
Assault	263	217	235	279	260	316	266	233	190	162
Burglary	129	156	146	168	134	103	127	95	72	79
Larceny	431	451	472	450	511	458	357	385	359	330
Auto Theft	28	24	32	18	16	17	7	16	17	12
Arson	32	19	16	10	4	10	4	2	1	3
Human Trafficking-Sex Acts	0	0	0	0	0	0	0	0	0	0
Human Trafficking-Servitude	0	0	0	0	0	0	0	0	0	0
Crime Index	911	885	926	951	955	921	773	745	651	598
Clearance Rate %	30.85	28.59	31.75	33.44	32.36	37.04	38.94	41.61	37.48	33.11
Domestic Violence Arrests	82	98	106	101	98	132	84	101	93	
Accidents	818	839	856	843	861	815	1067	1015	753	705
Injury	109	114	125	125	88	110	104	114	96	105
Fatal	0	0	0	1	0	2	0	0	0	0
Arrests	2440	2110	2066	2391	2102	2261	2208	2222	1878	1605
Juvenile Arrests	217	186	208	168	126	194	137	117	137	90
OVI Arrests	302	214	238	277	205	187	186	182	164	145
Citations	3554	3247	2841	3393	2576	3023	3366	3541	2872	2869
Calls	21765	20669	19470	19680	18062	20534	22949	28545	25701	25069

Enforcement by Officer

		TRAFFIC CITES	ARRESTS	OVI ARRESTS
CHIEF	LEE	0	0	
CAPT	COLE	0	0	
CAPT	PRUSHA	0	0	
DET	TRAVIS	0	1	
DET	FAFRAK	0	3	
DET	DREGER	0	1	
DET	JACOBS	2	7	
DET	DOMER	0	0	
DET	MARINO	4	5	
LT	TREHARN	0	0	
LT	WHEELER	50	3	1
LT	ENNEMOSER	9	10	
LT	LEWIS	3	2	
LT	SHEARER	46	12	3
SGT	SOIKA	0	2	
SGT	SHORT	58	26	1
SGT	ENNEMOSER	47	12	
SGT	GAYDOSH	29	22	3
PTL/OFF	ROMANOSKI	57	40	
PTL/OFF	DARRAH	62	44	8
PTL/OFF	COLE	80	7	
PTL/OFF	GORMSEN	124	21	
PTL/OFF	FULLER	82	34	4
PTL/OFF	POE	26	16	8
PTL/OFF	BUTCHER	34	11	
PTL/OFF	LIPCSEY	46	51	4
PTL/OFF	BOWEN	162	100	7
PTL/OFF	HADAWAY	150	23	1
PTL/OFF	NELSON	109	50	
PTL/OFF	HILBRUNER	193	53	2
PTL/OFF	AUCKLAND	158	64	3
PTL/OFF	LLEWELLYN	121	45	2
PTL/OFF	CARNAHAN	117	85	31
PTL/OFF	BROOKS	141	66	3
PTL/OFF	OLDHAM	69	130	16
PTL/OFF	SMITH	178	134	3
PTL/OFF	KUNKA	115	119	16
PTL/OFF	DRISCOLL	106	72	5
PTL/OFF	BURTON	164	76	4
PTL/OFF	ALLEN	45	47	6
PTL/OFF	NOAH	97	74	
PTL/OFF	WOMACK	103	61	6
PTL/OFF	MCNULTY	82	69	8
PTL/OFF	OTHER	0	10	
	TOTAL	2869	1608	145

Shift Activity and Action



Traffic Citations

12 point DUS	25
Additional Restrictions on Driving Upon Left Side of Roadway	1
Assured Clear Distance	22
Bicycle or Skateboard Riding on Sidewalk	1
Certain Acts Prohibited	1
Child Restraint system required	5
Crossing Roadway Outside Crosswalk; Diagonal Crossings at Intersections	2
Display Fictitious/Altered OL	21
Display of License Plates	5
Display OL of Another	4
Display Plates	45
Driver Permits	1
Drivers and Passengers Required to Wear Seat Belts	73
Driver's License or Commercial Driver's License Required	26
Driving in Marked Lanes or Continuous Lines of Traffic	66
Driving onto Roadway from Place Other Than Roadway: Duty to Yield	26
Driving Under Financial Responsibility Law Suspension or Cancellation	4
Driving Under Suspension	24
Driving Unsafe Vehicle	2
Driving Upon Divided Roadways	1
Driving Upon Right Side of Roadway	1
Driving Upon Street Posted as Closed for Repair	1
Driving While Under the Influence of Alcohol/Drugs	75
Driving with Temporary Instruction Permit; Curfew	6
Driving without Complying with License Reinstatement Requirement	1
DUS/ REV	183
Expired or Unlawful License Plates	207
Expired Tag	27
Fail to Transfer Registration	8
Failure to Comply with Order of Signal of P.O. - lawful order or direction	3
Failure to Control	28
Failure to Control; Weaving; Full Time & Attention	41
Fictitious Plates	20
Following Too Closely	3
FRA Suspension	156
Furnish false info to avoid citation	1
Hazardous or No Passing Zones	6
Headlights	36
Headphones While Driving	1
Hit Skip - Off Roadway	2
Hit Skip - Roadway	11
Illegal U-Turn	2

Traffic Citations Continued

Improper Turn	10
Juvenile Delinquent/Traffic Offender	1
Lend OL to Someone	1
Lighted Lights; Measurement of Distances and Headlights	2
Maximum Speed Limits; Assured Clear Distance Ahead	779
Motor Cycle	3
Motor Vehicle Stop Lights	3
Motor Vehicle Unattended	1
Muffler	11
No Motorcycle Endorsement	1
No Operator's License	37
No Rear Illumination	14
Obedying Traffic Control Device	17
One Way Streets & Rotary Traffic Islands	2
One-Way Highway	8
Open Container	4
Operating privilege has been Suspended	35
Operation in Willful or Wanton Disregard of Safety- On Highway	6
Operation of Vehicle at Yield Signs	2
Operation without Reasonable Control	1
Overtaking & Passing on Right	2
Overtaking, Passing to Left	3
Passenger	2
Pedestrian on Sidewalks	1
Permitting Operation without Valid License; One License Permitted	1
Permitting Unlicensed Driver	1
Probationary License - Restrictions	1
Prohibited Standing or Parking Places - On a Curb	3
Public Safety Vehicle	1
Rear View Mirror; Clear View to Front; Both Sides and Rear	5
Reckless Operation (off Highway)	2
Reckless Operation / Unsafe vessel operation	1
Registration-Failure to Register	2
Reinstatement Fee Required	49
Right of Way	2
Right of Way (turning left)	12
Right of Way at Intersections	3
Right of Way in Crosswalk	3
Right of Way of Public Safety or Coroner's Vehicle	2
Right of Way on Public Highway	6
Right of Way when Turning Left	33
Right of Way Yielded by Pedestrian	3
Rules For Marked Lanes	44
Shortcutting	2
Signal Lights	35

Traffic Citations Continued

Signals Before Changing Course, Turning or Stopping	13
Slow Speed	2
Space Between Moving Vehicles	1
Speed Limits	87
Squealing Tires, Peeling, Cracking Exhaust Noises	4
Starting and Backing Vehicles	27
Stop Lights	4
Stop Sign	139
Stopping for School Bus	12
Tail Light Illumination of Rear License Plate	3
Temporary Permit Restriction	10
Texting while Driving	2
Toy Vehicles on Streets	1
Traffic Control Signals & Lights	95
Traffic Control Signals/Left Turn on Red	1
Traffic Control Signals/Right Turn on Red Light	1
Turn Signals	24
Turning at Intersections	17
Unsafe Vehicle	3
Walking in street	4
Wearing Earplugs or Earphones Prohibited	1
Wrongful Entrustment	12

Calls for Service

Incident Type	Totals
911 Emergency Welfare Check	87
Abandoned Vehicle	6
Accident - Injury	75
Accident - Non-Roadway - Auto	51
Accident - Private Property	91
Accident - Property Damage	599
Accident Hit Skip	82
Accidental Damage	2
Alarms - Auto	18
Alarms - Fire	1
Alarms - Intrusion	571
Alarms - Panic	29
Alcohol Violations	4
Animal Complaint	358
Assault	69
Assist Faculty Staff	1
Assist Fire Department	208
Assist Maintenance	1
Assist Motorist	10
Assist Other Agency	429
Assist Rescue Squad	14
Assist Visitor	1
Auto Repossessed	1
Auto Towed	67
Bomb Threat	2
Burglary/Breaking & Entering	105
Child Abuse	2
Civil Dispute	38
Community Policing Activity	1597
Complaints	5
Court	119
Criminal Damage	147
Criminal Mischief	19
Criminal Trespass	52
Custody Dispute	48
Debris in the Roadway	63
Disabled Vehicle	320

Calls For Service Continued

Disorderly Conduct	1041
Domestic Situations	350
Drug Offense - Miscellaneous	66
DUI	84
Escort	125
Escort - Money	25
Fireworks	27
Follow-up	403
Foot Patrol	85
Forgery	1
Found Property	227
Fraud	101
Harassment	92
Illegal Hunting	1
Informational	62
Juvenile Complaints	167
K9	130
K9 Training	6
Larceny-Theft	400
Littering	8
Lost Property	47
Menacing	56
Message Delivery	47
Metro SWAT Assist	8
Miscellaneous	1054
Missing Juvenile	16
Missing Person	15
MN	1
Motor Vehicle Theft	33
Mutual Aid - Given	133
Mutual Aid Received	2
Neighbor Dispute	1
Noise Complaint	205
Open Buildings/Window	27
Open Burn/Dump	2
Open Container	51
Parking Violation	309
Party Registration	70
Passing School Bus	32
Policy Violation	40
Premises Check	1322
Property Removal/Standby	71
Protection Order	21

Calls For Service Continued

Psychiatric Situation	152
Public Indecency	18
Records Checks	1412
Recovered Property	1
Ridership Program	34
Robbery	12
Roommate Dispute	15
Sex Offense	32
Shoplifter	1
Shots Fired	27
Speaking Engagement	33
Special Detail	1385
Speed Trailer	6
Stabbing	1
Suicide - Attempt	8
Suicide - Threat	38
Suspicious Circumstances	42
Suspicious Event	1247
Suspicious Package	1
Suspicious Person	73
Suspicious Vehicle	69
Telecommunication Harassment	60
Traffic Citation	1
Traffic Complaint	290
Traffic Stop	6702
Training	57
Unauthorized Use	15
Unwanted Subject	71
Use of Force	81
Void	13
Warrant Entered	2
Warrant Service	309
Weapon Offenses	14
Welfare Check	589
Wireless E911 Check	2

Parking Citation Summary

*These numbers are incomplete due to a change in systems

	2017 Count	2018 Count	Difference Total
Citation Entered	1638	566	-1072
E Citation Entered	10973	10607	-366
TOTAL CITATION ENTERED:	12611	11173	-1438
Voided Citation	737	122	-615
NET ENTERED CITATIONS:	11874	11051	-823
First Late Fee Added	6244	5506	-738
Second Late Fee Added	3080	2436	-644
TOTAL LATE FEES:	9324	7942	-1382
NSF Check Fees Added	1	3	2
Partial Payment Received	269	798	529
Normal Full Payment	2654	8168	5514
Web Payment	7376	6680	-696
TOTAL PAYMENTS:	10299	15646	5347
Payment Reversal	9	13	4
Refund	4	0	-4
Partially Dismissed	679	11	-668
Dismissed Citation	383	182	-201
TOTAL DISMISSALS:	1062	193	-869
Administrative Review Upheld	320	381	61
Administrative Review Partial Dismiss	112	11	-101
Administrative Review Dismissed	309	182	-127
TOTAL REVIEWS:	629	574	-55
DMV R/O Inquiry Sent	7390	10885	3495
DMV R/O Inquiry Received	8739	10465	1726
DMV R/O Reject	86	420	334

Parking Citations

*This is an incomplete count due to a switch in systems in January

Violation	Count
Between safety zone and adjacent curb	13
Beyond 2 hour limit-without permit	137
Beyond 2 hour limit	56
Depositing non-coins as lawful payment	1
Double parking	6
Expired plate	32
Expired validation sticker	30
Fictitious plates	4
Front yard parking	12
Front yard/ corner lot parking	128
Handicapped access aisle/diagonally striped area	5
Handicapped parking only	28
Handicapped parking only/ muni lot	5
Improper angle parking	1
In or along street excavation	3
More than 12 inches from curb	21
More than 2 motorcycles in one parking space	2
No parking 3:00 am to 6:00 am	320
Obstructing a driveway	17
On a crosswalk	11
On a curb	10
On a sidewalk	173
On a tree lawn	19
On roadway portion of thruway	9
On street selling, repairing or advertising	4
Open lot storage/ 15 days +	1
Open vehicle door on traffic side	2
Park in area of fire station	1
Parked 3:00am-6:00am, city lot	155
Parked 8:00am-6:00pm 2 hours + without 10 hour permit/ muni lot	6
Parked at a yellow curb	139
Parked between 3:00am-6:00am on public streets	387
Parked beyond 10 min limit	26
Parked beyond 2 hour limit	880
Parked beyond 30 min limit	1
Parked beyond paid time/ expired meter	6296
Parked during snow ban	78
Parked facing wrong direction/angle	108

Parking Citations Continued

Parked facing wrong direction	89
Parked in alley/narrow street	10
Parked in designated permit spot without permit/ muni lot	659
Parked in fire lane	5
Parked in loading zone	5
Parked in non-designated space in municipal lot	1
Parked junk vehicle/ parts, 48 hours+	2
Parked large vehicle in residential district	2
Parked outside of designated meter space	54
Parked over 24 hours/on-street storage	65
Parked where signs prohibit	1764
Parking and obstructing the view	1
Parking at yellow curb	25
Parking in a taxicab stand	1
Parking outside of designated parking space	17
Straddling two parking spaces	18
Tamper/ impair parking meter	1
Unattended and running/with keys in vehicle	1
Upon a bridge	2
Upon a main traveled part of the street	6
Within 10 feet of a fire hydrant	18
Within 20 feet of a crosswalk	34
Within 1 foot of another vehicle	2
Within 10 feet of fire hydrant on private property	4
Within 20 feet of gas pumps	1
Within 30 feet of a stop sign or flashing beacon	12
Within 30 feet of a stop sign	4
Within 30 feet of a traffic control device	2
Within 50 feet of a RR crossing	3
Within an intersection	2
Within 1 foot of another vehicle	1
Within the restricted area of a fire station	1
Grand Total	11938

Adult Arrests

CRIMINAL OFFENSE	ARRESTS
Abandoning Animals	1
Abduction	3
Aggravated Arson	1
Aggravated Burglary	4
Aggravated Menacing	7
Aggravated Robbery	4
Aggravated Vehicular Assault	1
Animal Bites	1
Assault	15
Assault on LEO	4
Attempted Aggravated Arson	1
Attempted Burglary	1
Breaking and Entering	1
Burglary	17
Carrying Concealed Weapon	11
Complicity	4
Contributing to Delinquency of Minor	2
Criminal Damage	23
Criminal Mischief	9
Criminal Simulation	1
Criminal Trespass	15
Cruelty to Animals	1
Discharging Firearms	4
Discharging Fireworks	1
Disorderly Conduct	229
Display Fictitious OL	2
Disrupting Public Service	4
Dogs, Cats and Other Animals At Large	12
Domestic Violence	78
Drug Paraphernalia	1
Endangering Children	7
Fail to Appear Warrant	184
Failure to Comply with Lawful Order of PO	3
Failure to Disclose Information	3
Falsification	11
Felonious Assault	8
Forgery	5
Graffiti	1
Gross Sexual Imposition	2
Having Weapons Under Disability	1

Adult Arrests Continued

Held for Other Agency	8
Hidden Compartment in Vehicle	1
Illegal Conveyance of Drugs of Abuse to Facility	4
Impersonating a Police Officer	1
Improperly Discharging at Occupied Structure	1
Improperly handling of Firearms in MV	7
Inciting to Violence	1
Inducing Panic	2
Intimidation of Crime Witness	1
Kidnapping	1
Litter	4
Making False Alarms	4
Menacing	2
Misuse of Credit Card	3
Misuse of 911	1
Nuisance Party	10
Obstructing Justice	1
Obstructing Official Business	37
Open Container	21
OVI	145
Possession Drug Abuse Instruments	41
Possession of Cocaine	2
Possession of Controlled Substance	6
Possession of Criminal Tools	3
Possession of Drug Abuse Instruments	19
Possession of Drugs	33
Possession of Hashish	4
Possession of Marijuana	186
Possession of MJ Paraphernalia	72
Possession of Paraphernalia	6
Prohibitions	124
Public Indecency	3
Receiving Stolen Property	23
Refusal To Sign Citation	1
Resisting Arrest	9
Robbery	3
Sexual Imposition	3
Soliciting without a Permit	3
Taking ID of Another	1
Taking Identity of Another	1
Telephone Harassment	9
Theft	37
Theft of MV	1
Trafficking In Drugs	5

Adult Arrests Continued

Unauthorized Use of MV	9
Unlawful Noise	77
Unlawful Restraint	2
Using Weapons While Intoxicated	2
Vandalism	1
Violation of PO	1
Violation of Protection Order	18
Warrant Other Agency	208
Weapon Under Disability	1

Juvenile Arrests

CRIMINAL CHARGES	ARREST
Aggravated Arson	1
Aggravated Robbery	1
Assault	3
Assault on LEO	1
Attempted Arson	2
Criminal Damaging	2
Criminal Trespass	1
Curfew	2
Disorderly Conduct	10
Domestic Violence	7
Failure to Comply with Order or Signal of PO	1
Falsification	1
Felonious Assault	2
Illegal Conveyance of Drugs	1
Inducing Panic	1
Juvenile Cigarette or Tobacco	2
Menacing	3
Obstructing Official Business	2
Possession of Drugs	1
Possession of Marijuana	12
Possession of MJ Paraphernalia	4
Prohibitions	12
Receiving Stolen Property	7
Theft	2
Theft of MV	1
Trafficking in Drugs	1
Unauthorized Use of MV	1
Unlawful Restraint	1
Unruly	20
Using Weapons While Intoxicated	1
Voyeurism	1
Warrant Other Agency	1

Crime Reported to FBI

Classification of Offenses	Offenses Reported OR Known to Police (Including Unfounded and Attempts)	Unfounded, I.E. False or Baseless Complaints	Number of Actual Offenses (column 2 minus Column 3)(Includes Attempts)	Total Offenses Cleared by Arrest or Exceptional Means	Number of Clearances Involving Only Person Under 18 Years of Age
1. CRIMINAL HOMICIDE	0	0	0	0	0
a. Murder and non-negligent manslaughter	0	0	0	0	0
b. Manslaughter by negligence	0	0	0	0	0
2. Forcible Rape Total	3	0	3	0	0
a. Rape by force	3	0	3	0	0
b. Attempts to commit forcible rape	0	0	0	0	0
3. Robbery Total	9	0	9	5	0
a. Firearm	4	0	4	1	0
b. Knife or cutting instrument	0	0	0	0	0
c. Other dangerous weapon	2	0	2	2	0
d. Strong-arm (hands, fist, feet, etc.)	3	0	3	2	0
4. Assault Total	163	0	163	134	15
a. Firearm	2	0	2	0	0
b. Knife or cutting instrument	4	0	4	4	2
c. Other dangerous weapon	6	0	6	6	0
d. Hands, lists, feet, etc. - aggravated injury	13	0	13	9	
e. Other assaults - simple. not aggravated	138	0	138	115	12
5. Burglary Total	78	0	78	17	0
a. Forcible entry	29	0	29	3	0
b. Unlawful entry - no force	46	0	46	13	0
c. Attempted forcible entry	3	0	3	1	0
6. Larceny - Theft (except motor vehicle theft)	332	0	332	41	2
7. Motor Vehicle Theft Total	12	0	12	2	1
a. Autos	10	0	10	2	1
b. Trucks and buses	0	0	0	0	0
c. Other vehicles	2	0	2	0	0
GRAND TOTAL	597	0	597	199	18

Arsons

Property Classification	Offenses Reported OR Known to Police (Including Unfounded and Attempts)	Unfounded, I.E. False or Baseless Complaints	Number of Actual Offenses (column 2 minus Column 3)(Includes Attempts)	Total Offenses Cleared by Arrest or Exceptional Means	Number of Clearances Involving Only Person Under 18 Years of Age	Offenses Where Structures Uninhabited, Abandoned, or no Normally in Use	Estimated Value of Property Damage
Residential Houses, Townhouses, Duplexes, etc.	0	0	0	0	0	0	0
Other Residential: Apartments, Motels, Hotels, Dormitories, Boarding Houses, etc.	2	0	2	1	0	0	120
Storage: Barns, Garages, Warehouses, etc.	0	0	0	0	0	0	0
Industrial/Manufacturing	0	0	0	0	0	0	0
Other Commercial: Stores, Restaurants, Offices, etc.	0	0	0	0	0	0	0
Community/Public: Churches, Jails, Schools.	0	0	0	0	0	0	0
Colleges, Hospitals, etc.	0	0	0	0	0	0	0
All other Structure: Out Buildings, Monuments, Buildings Under Construction, etc.	0	0	0	0	0	0	0
TOTAL STRUCTURE	2	0	2	1	0	0	120
Motor Vehicles: Automobiles, Trucks, Buses.	0	0	0	0	0	0	0
Motorcycles, etc.	0	0	0	0	0	0	0
Other Mobile Property: Trailers, Recreational Vehicles, Airplanes, Boats, etc.	0	0	0	0	0	0	0
TOTAL MOBILE	0	0	0	0	0	0	0
Total Other: Crops, Timber, Fences, Signs, etc.	1	0	1	1	1	0	2000
GRAND TOTAL	3	0	3	2	1	0	2120

Law Enforcement Officers Killed or Assaulted

	Type of Weapon						Type of Assignment						Police Assaults Cleared
	Total Assaults by Weapon	Firearm	Knife or other Cutting Instrument	Other Dangerous Weapon	Hands, Fists, Feet, etc.	Two-Officer Vehicle	One-Officer Vehicle		Detective or Special Assignment		Other		
							Alone	Assisted	Alone	Assisted	Alone	Assisted	
Responding to disturbance calls	3	0	0	0	3	0	0	3	0	0	0	0	3
Burglaries in progress or pursuing suspects	0	0	0	0	0	0	0	0	0	0	0	0	0
Robberies in progress	0	0	0	0	0	0	0	0	0	0	0	0	0
Attempting other arrests	0	0	0	0	0	0	0	0	0	0	0	0	0
Civil Disorder (Riots, etc.)	0	0	0	0	0	0	0	0	0	0	0	0	0
Handling, Transporting Prisoners	1	0	0	0	1	0	0	0	0	0	0	1	1
Investigating Suspicious persons or circumstance	0	0	0	0	0	0	0	0	0	0	0	0	0
Ambush - no warning	0	0	0	0	0	0	0	0	0	0	0	0	0
Handling person with mental illness	1	0	0	0	1	0	0	0	0	0	1	0	1
Traffic Pursuits and stops	1	0	0	0	1	0	1	0	0	0	0	0	1
All Other	1	0	0	0	1	1	0	0	0	0	0	0	1
TOTAL	7	0	0	0	7	1	1	3	0	0	1	1	7
Number with personal injury	6	0	0	0	6								
Number without personal injury	1	0	0	0	1								
	0	0	0	0	1	0							
	1	3	0	0	1	1							
Time of assaults	12:01	2:00	4:00	6:00	8:00	10:00	12:00						