



**Request Details**

To review other sections of your application, select the appropriate section from the pull-down menu above and then press the Go button. You may edit this application if you want to correct a mistake. After you have are satisfied with the information, please click on the Submit Application link on the left to complete your submission.

Note: Fields marked with an \* is required.

\* 1. Select one of the choices listed below. You can apply for a maximum of 3 projects within this activity.

Select	Category
<input type="checkbox"/>	Community Risk Reduction
<input type="checkbox"/>	Code Enforcement/Awareness
<input type="checkbox"/>	Fire & Arson Investigation
<input type="checkbox"/>	National/State/Regional Programs and Studies

**Community Risk Reduction - Capabilities Information**

**Fire Prevention and Safety**

Community Risk Reduction Project

[View Details](#)

Item	Number of units for first 12 months	Cost per unit for first 12 months	Total Cost in first 12 months	Number of units for second 12 months	Cost per unit for second 12 months	Total Cost in second 12 months	Total Cost
1. dual sensor smoke detector	500	\$ 15	\$ 7,500	0	\$ 0	\$ 0	\$ 7,500
2. Photoelectric smoke detector with escape light	27	\$ 37	\$ 999	0	\$ 0	\$ 0	\$ 999
<b>Total</b>			<b>\$ 8,499</b>			<b>\$ 0</b>	<b>\$ 8,499</b>

[Back to Request Details](#)



# Parking Update Downtown Kent

City Council  
September 6, 2017



## Why is Update Needed?

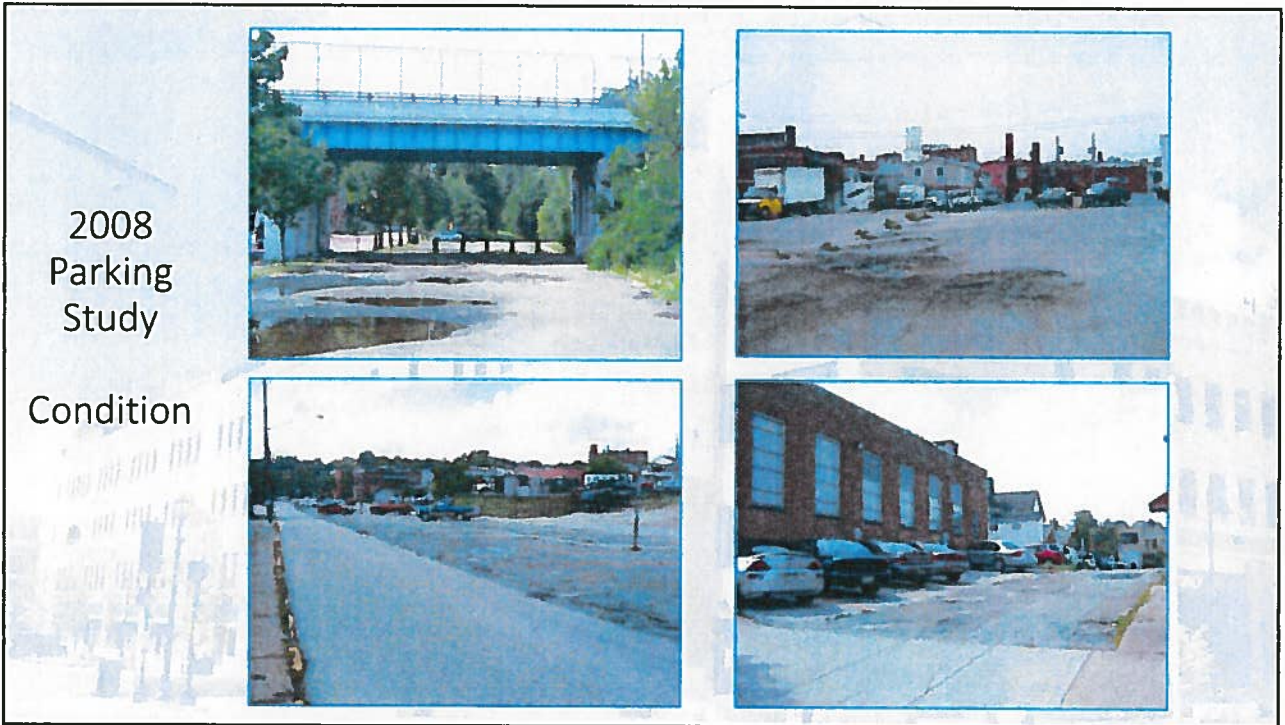
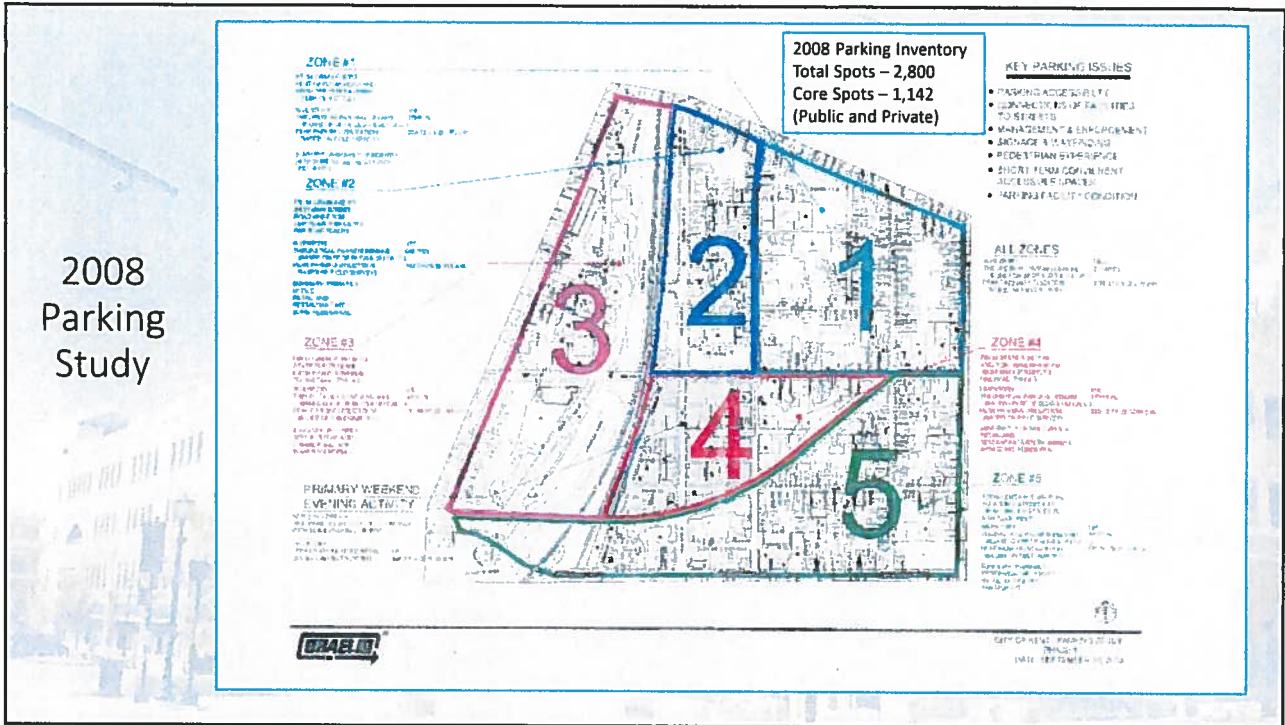
- Downtown redevelopment has started to “mature”
- To plan for potential future needs
- To optimize parking management systems
- To address parking supply perception versus reality

## 2008 Parking Study

In 2008, Graelic was Commissioned to Conduct a Parking Study of Downtown Kent that was Presented to Council

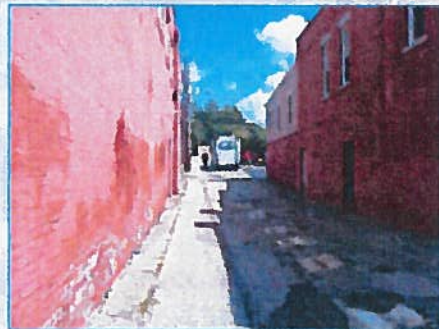
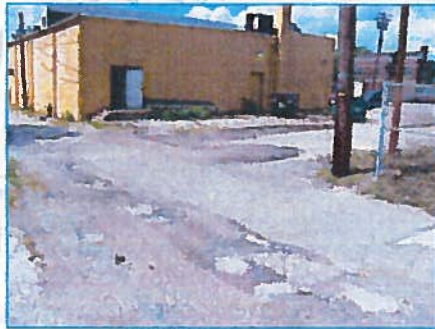
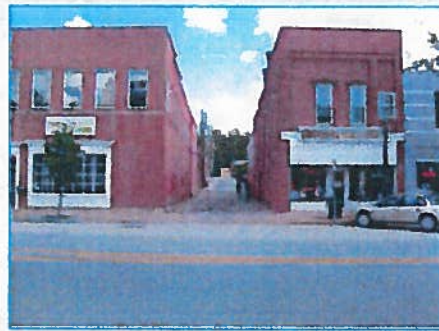
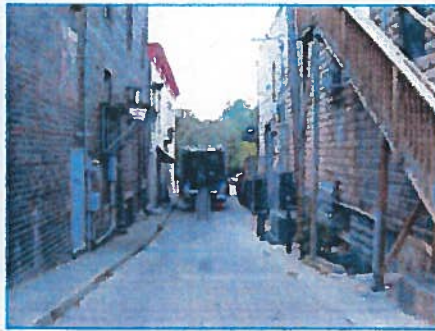
## 2008 Parking Study

- Key Parking Issues
  - Parking accessibility
  - Connections of facilities to streets
  - Management and enforcement
  - Signage and wayfinding
  - Pedestrian experience
  - Short-term convenient accessible spaces
  - Parking facility condition
- Daytime parking count showed an overall peak utilization rate of 46.3%
- Late Night parking count showed a peak utilization rate of 106% in the "entertainment district"



2008  
Parking  
Study

Connections



2008  
Parking  
Study

Signage



## 2012 Parking Update

In 2012, a Parking Update was Provided to Council  
Assessing the Impact of the then In-Progress  
Redevelopment of Downtown

## 2012 Parking Summary

- Extra inventory under-utilized (<50%)
- Poor management and facilities
- Utilization goal – 85%
- Need to update facilities (parking and pedestrian)
- 1,000 of 1,600 parking spaces downtown are public (zones 1-3)
- Key goals to better management
  - Business friendly
  - Easy to use for all (including visitors)
  - Flexible
- Rate driven utilization

## 2012 Parking Recommendations

- Charge for parking in KCG
- Use public surface lots for employees with permits during day
- Use public surface lots for customers on evenings and weekends
- Install 262 parking meters for short-term weekday users
- Use balance of on-street parking for free longer term parking

## 2017 Parking Update

That Was Then,  
This is Now.....

## 2016 -2017 Assessment Methodology

- Conduct inventory of total available parking spaces
- Evaluate the conditions of parking resources
- Evaluate the proximity of the parking spaces
- Determine actual utilization rates
  - Downtown was divided into three zones
  - Counts of available spaces conducted every 45 minutes
  - Each count typically took 15 minutes
  - Conducted daytime and evening counts
  - Conducted counts on the perceived busy days of Thursday and Friday
  - Only public controlled (at least partially) spaces were counted

## 2016 - 2017 Assessment Methodology (cont.)

- Results calculated for two sets of parking spaces
  - Daytime public controlled spaces – 1,130 (not inc. courthouse lot, medical lot)
  - Evening/weekend public spaces – 1,252
- Factors considered as influential
  - Weather
  - Downtown events
    - Events at the Kent Stage
    - Events at the Hotel and Conference Center
    - Other miscellaneous events
  - KSU in session or not
  - Hotel occupancy
  - Time of day and day of week





1,590 Total Spaces  
Compares to a Total of 1,142 Spaces in 2008



2016-17  
Parking  
Status



Connections



2016-17  
Parking  
Status

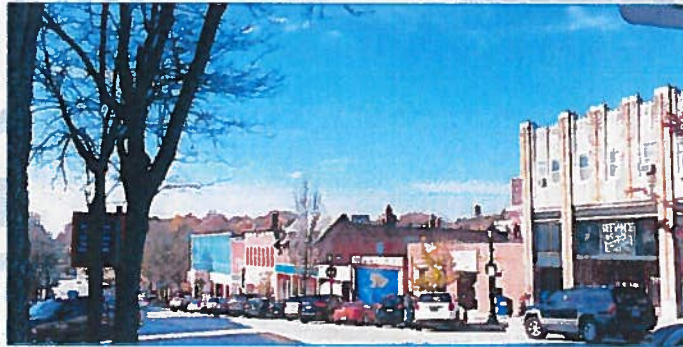


Signage



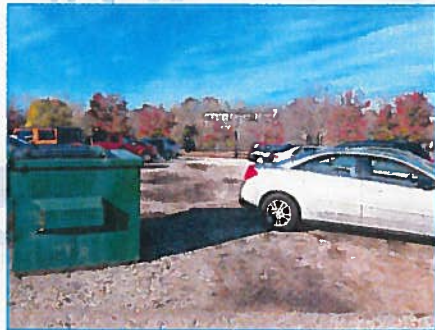
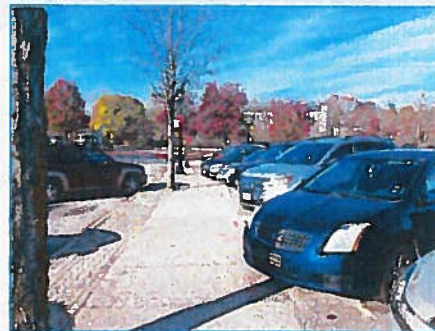
2016-17  
Parking Status

Rate Driven  
Utilization



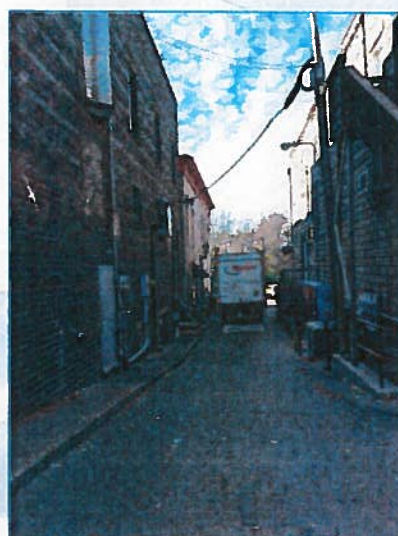
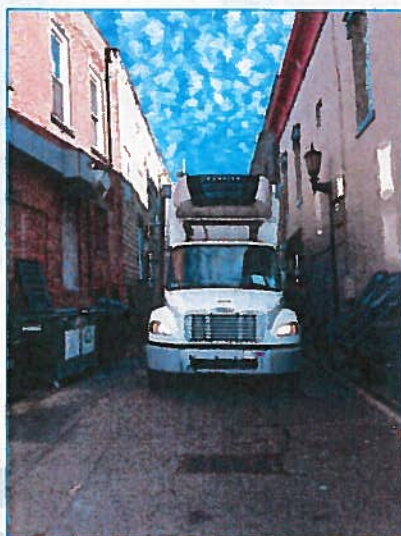
2016-17  
Parking Status

Opportunities  
Remain -  
Physical  
Condition



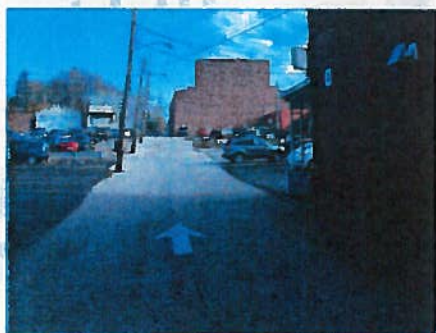
2016-17  
Parking Status

Opportunities  
Remain -  
Connections



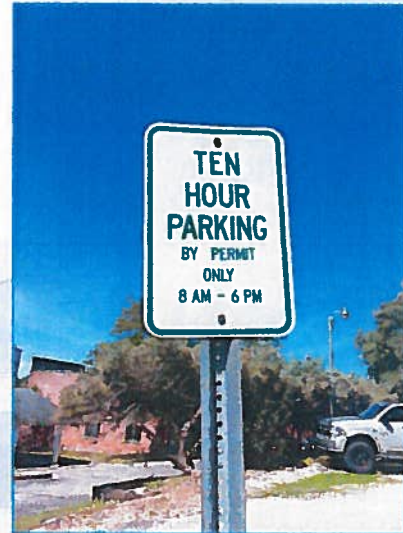
2016-17  
Parking Status

Opportunities  
Remain -  
Connections



2016-17  
Parking Status

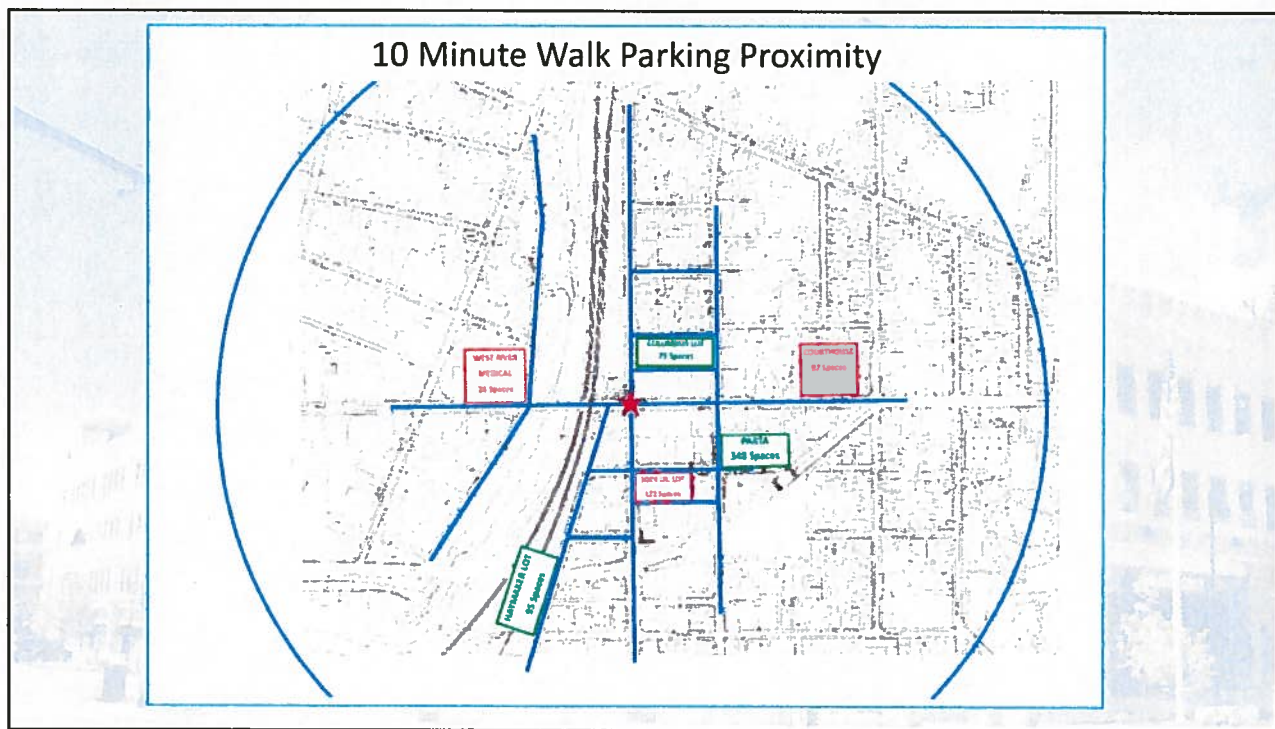
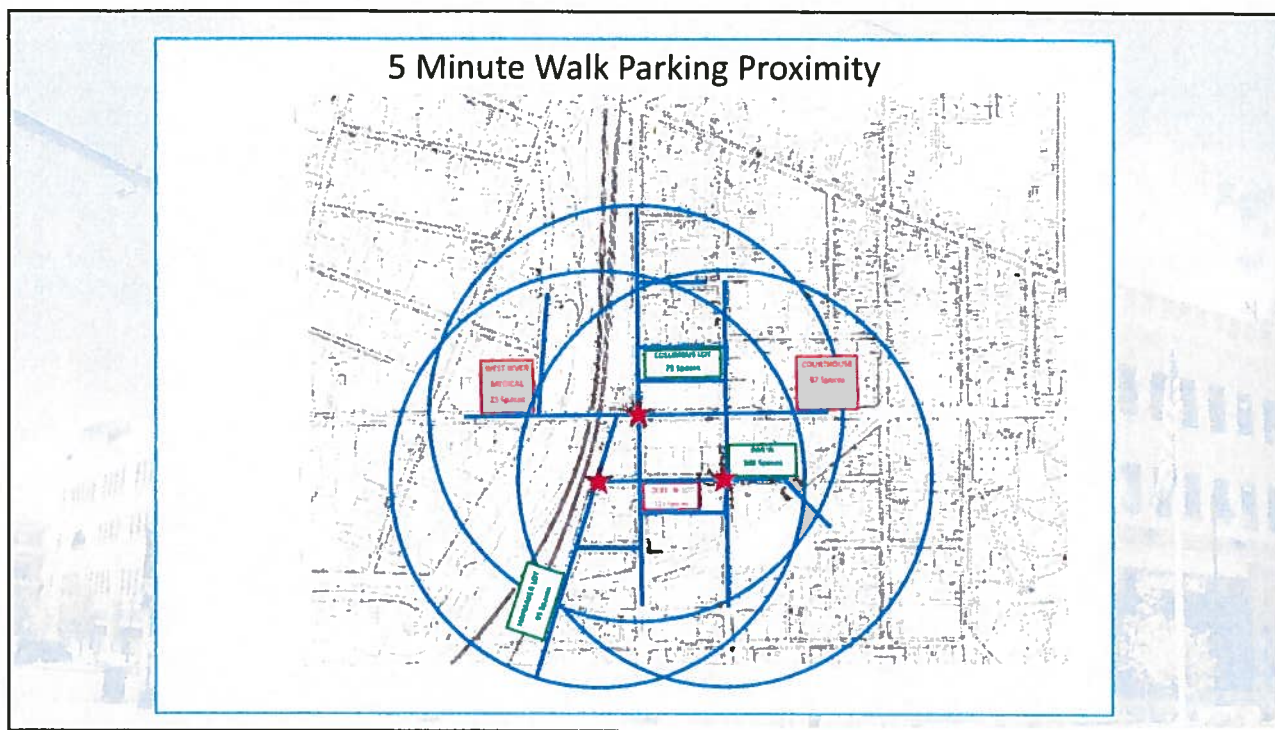
Opportunities  
Remain -  
Signage



2016-17  
Parking Status

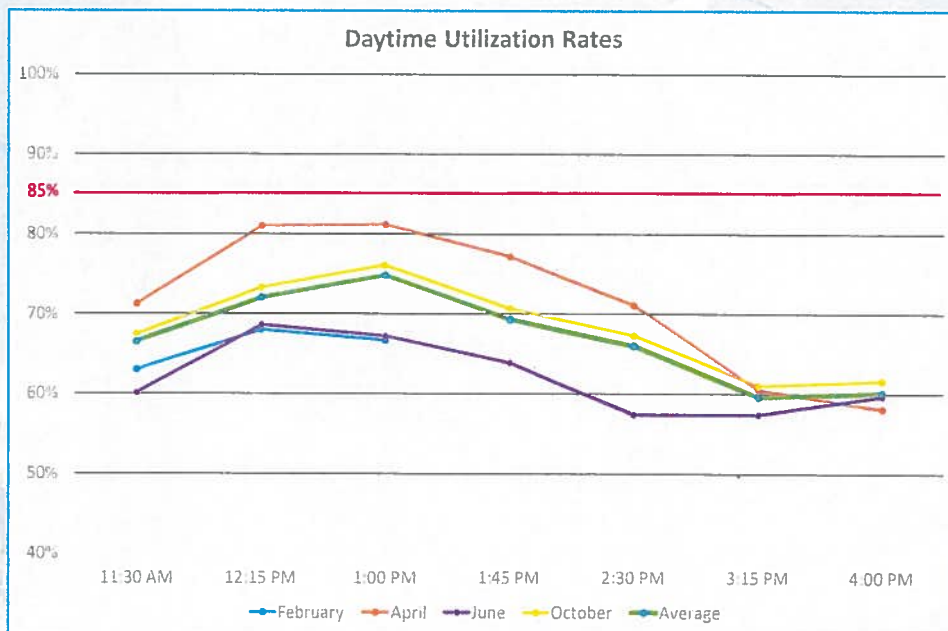
Opportunities  
Remain -  
Signage

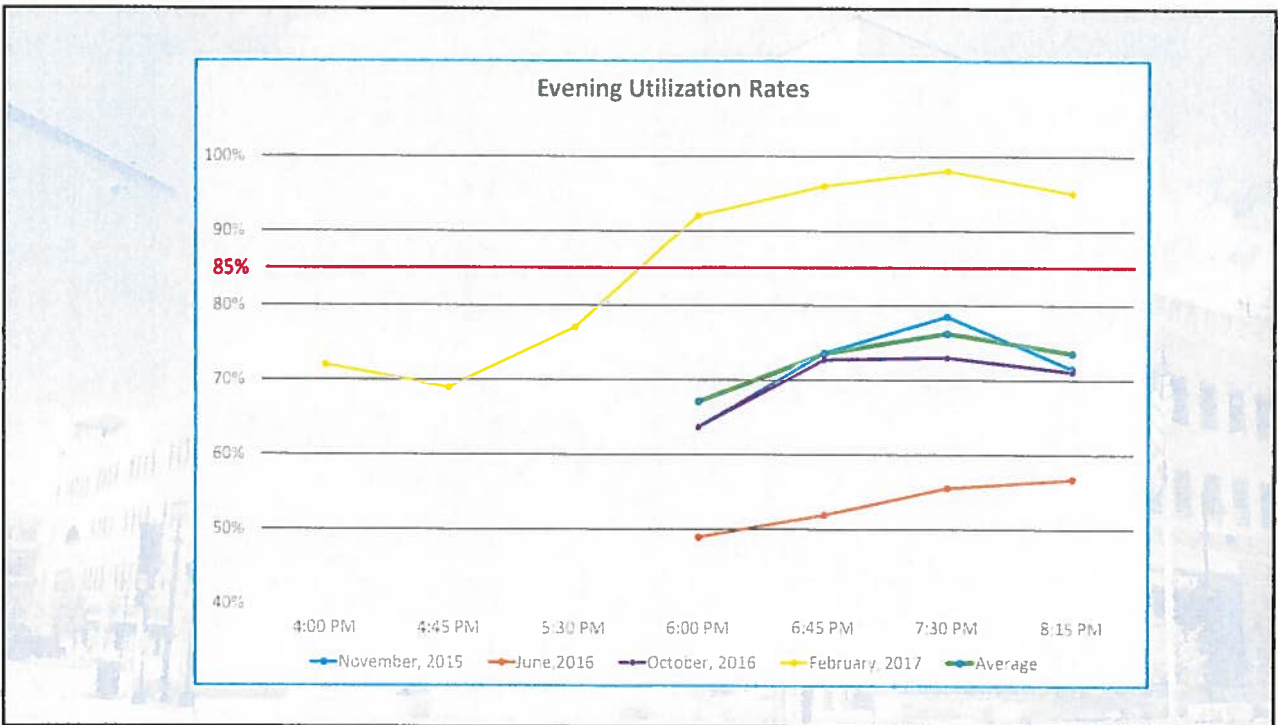
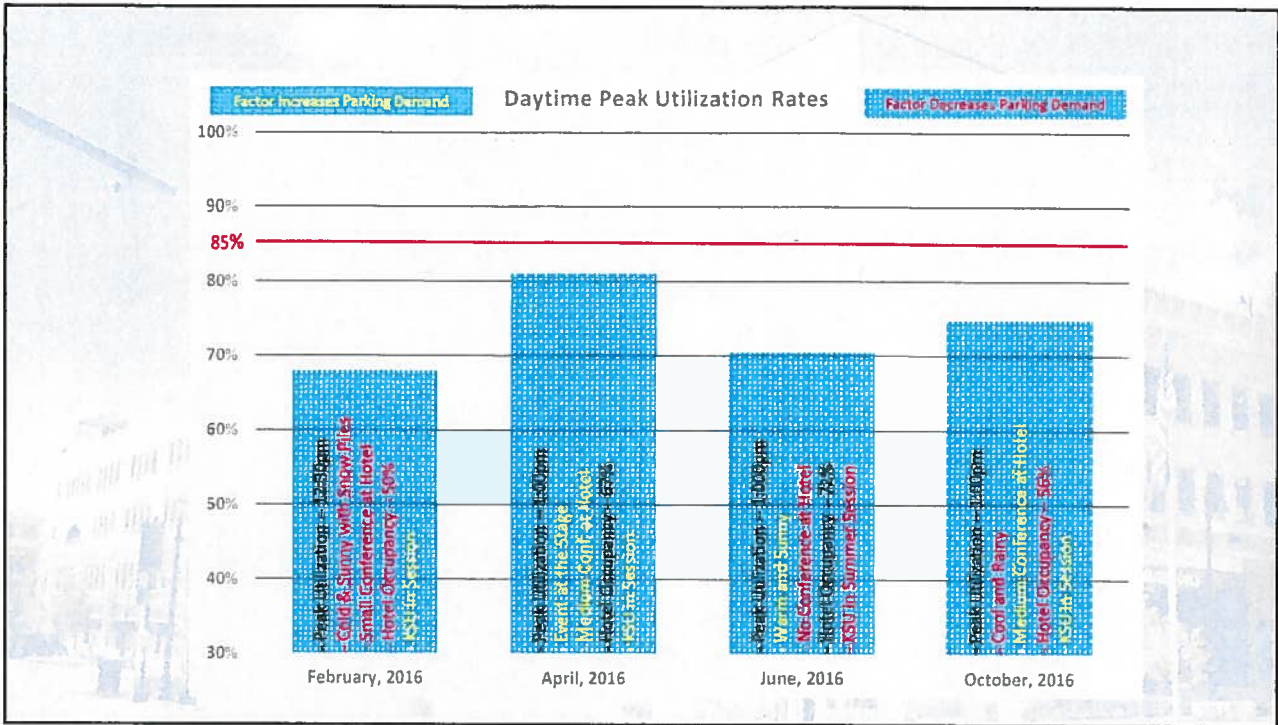




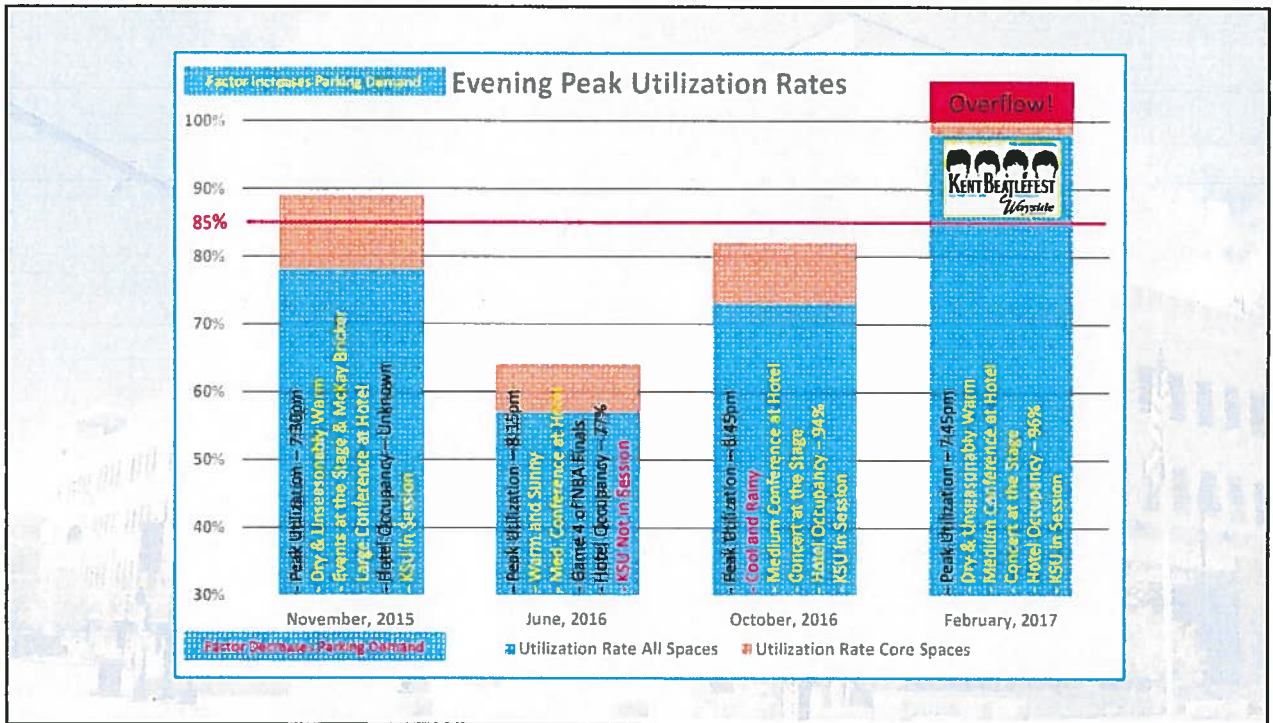
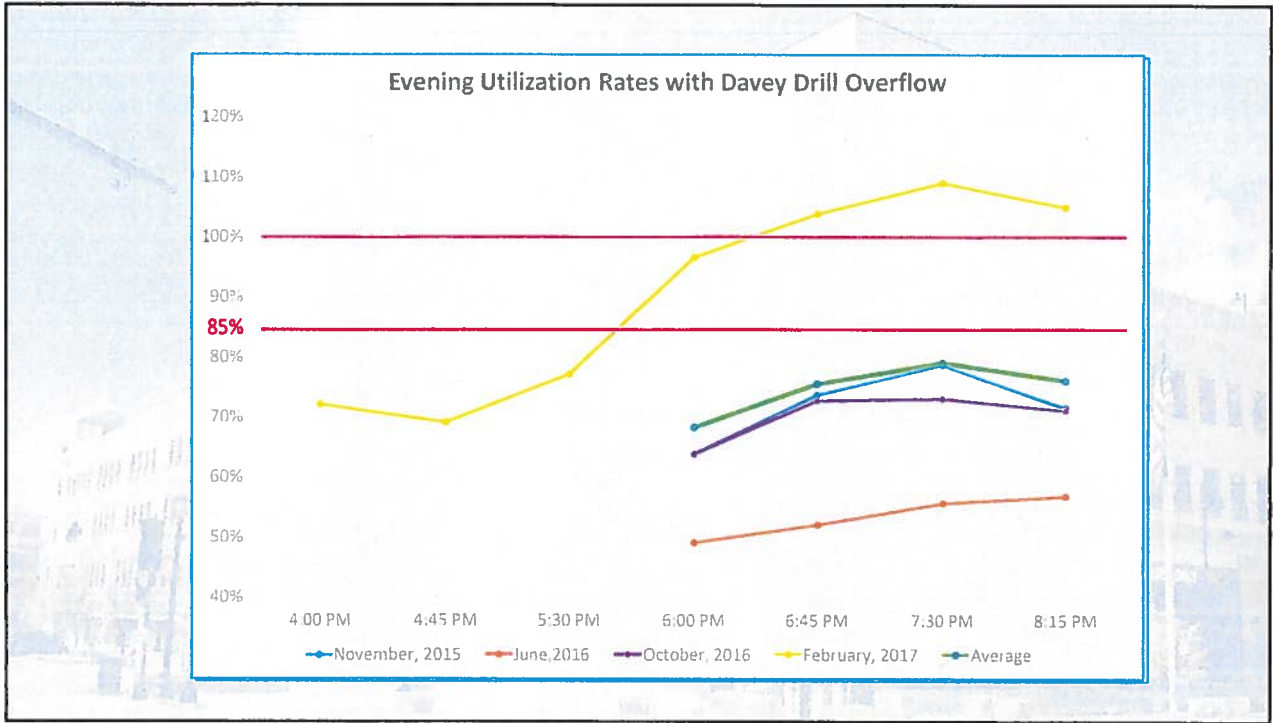
## Evaluation Criteria

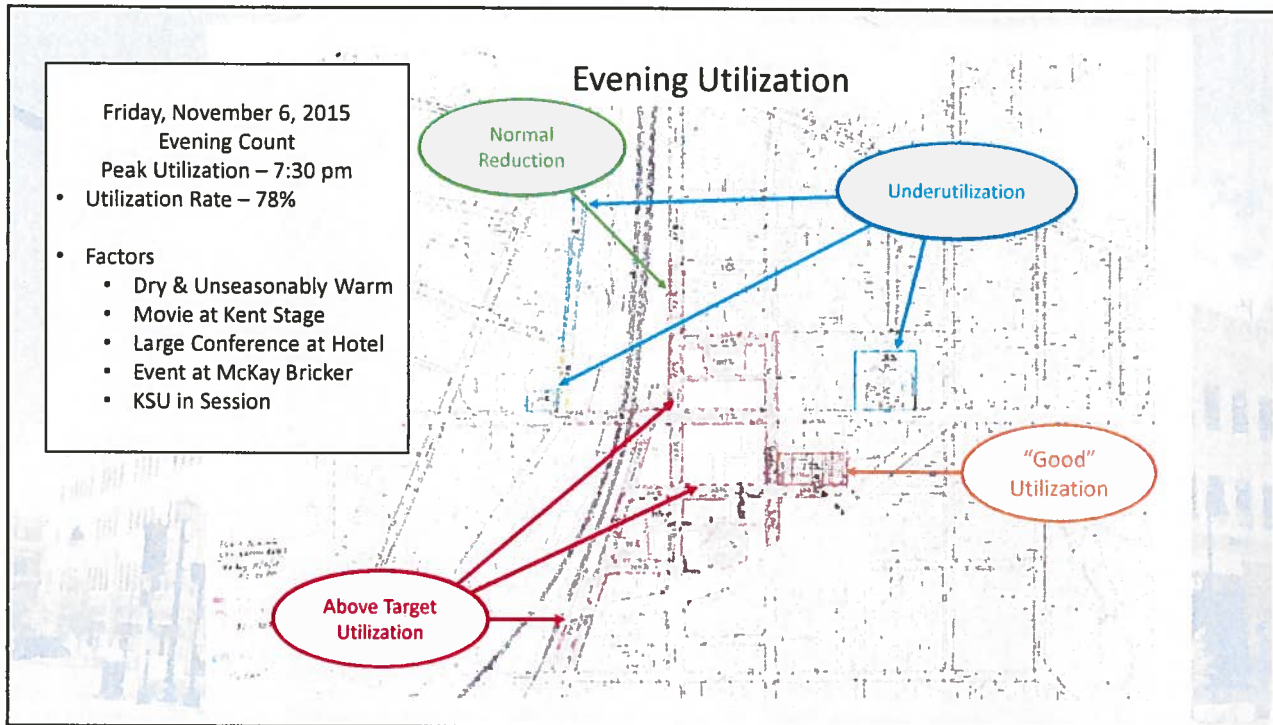
- +/- 85% target utilization rate
- Daytime peak utilization times
  - Midday – Thursday and Friday
  - KSU in session
  - Large event at conference center
  - Mild weather
- Evening peak utilization times
  - Friday and Saturday evenings
  - KSU in Session
  - Events at The Stage and the conference center
  - Mild weather











## Conclusions of Parking Counts

- Need for immediate action?
  - Average peak daytime utilization rate of 74% with a high of 82%
  - Average peak evening utilization rate of 69% with a high of 79% w/o Beatlefest
  - Average peak evening utilization rate of 79% with a high of 109% with Beatlefest
- Parking is not normalized yet
  - Construction workers
  - New residents
  - CAED Building
  - Student parking being phased out in KCG
  - Courthouse redevelopment
  - Potential other new development

## Conclusions of Parking Counts (cont.)

- Parking management successes
  - Parking meters
  - Presence of no-limit free parking
  - New signage
  - Parking deck
  - Locke Lane lot

## Conclusions of Parking Counts (cont.)

- Parking management opportunities
  - Some inadequate and unclear signage remains
  - Columbus lot and N. Water St. permits
  - Absence of meters on N. Depeyster
  - Student passes in parking deck
  - Gougler Street and E. Main Street lighting
  - Condition of College and Haymaker lots

## Conclusions of Parking Counts (cont.)

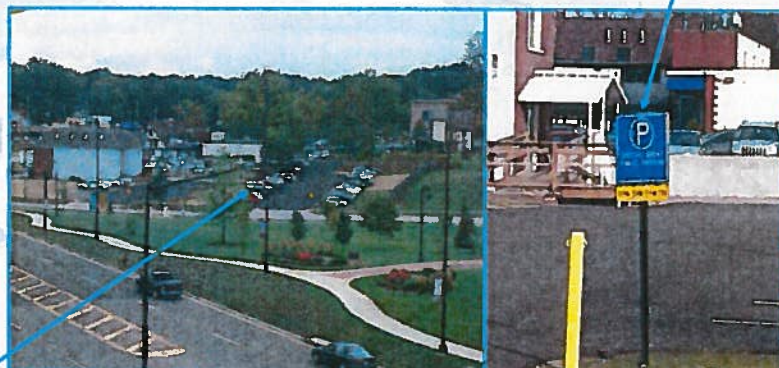
- Event parking needs management solutions
  - Improve utilization rates of courthouse and medical lots
    - Maximum observed non-special event courthouse utilization rate was 14%
  - Implement a more effective valet process for large events
  - Create and execute a marketing campaign
- Consider adding event parking resources
  - Leverage the L.N. Gross development for additional event parking
  - Explore use of nearby KSU lots
  - New police building lot
  - Kent Free Library
  - Davey Drill

## Actions Recently Taken

New Signage



Special Event Parking





New KSU lots behind health dept.




## Actions Recently Taken

Parking Postcard Updated





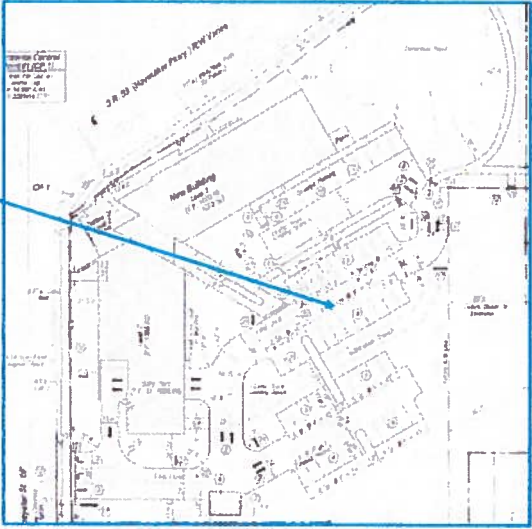
PARTA Large Event Valet



## Coming Soon

**Police Station**

**21 New Parking Spaces**  
**Evenings and Weekends**

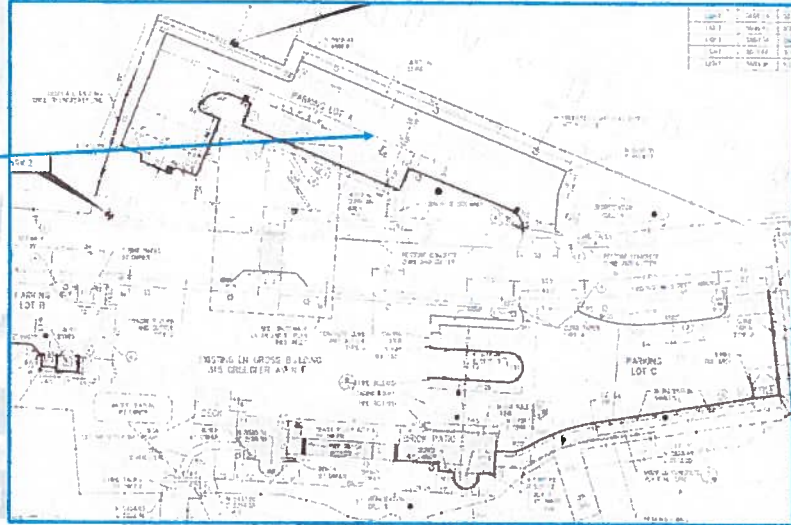


## Coming Soon

**L.N. Gross Building  
Parcels Leased by City**

**52 New Parking Spaces  
Evenings and Weekends**

**Development Cost – Private  
Cost to City – Below Market Lease**



## Next Steps

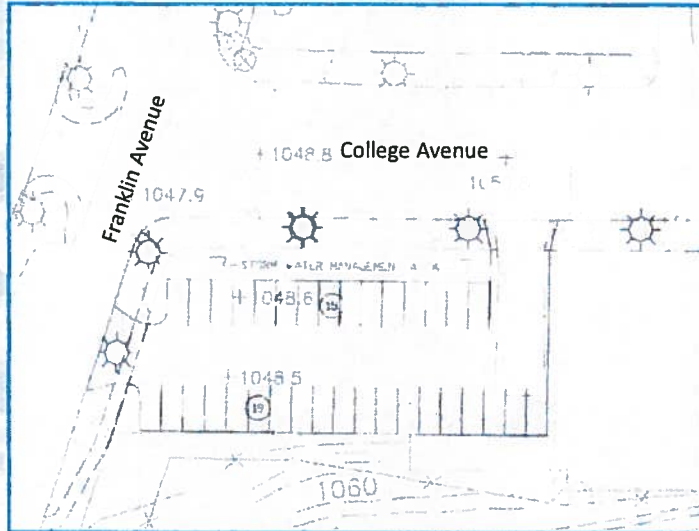
- Significant new development should be carefully evaluated for parking impact
- Continue to pursue management solutions for event “spread”
- Continue to evaluate utilization rates as parking becomes normalized
- Define options for expanding parking resources

## Potential New Parking Resource

**College Avenue**  
Charlie Thomas Parcels

**34 New Parking Spaces**

Development Cost Estimate - \$204K - \$238K  
Acquisition Cost - ?

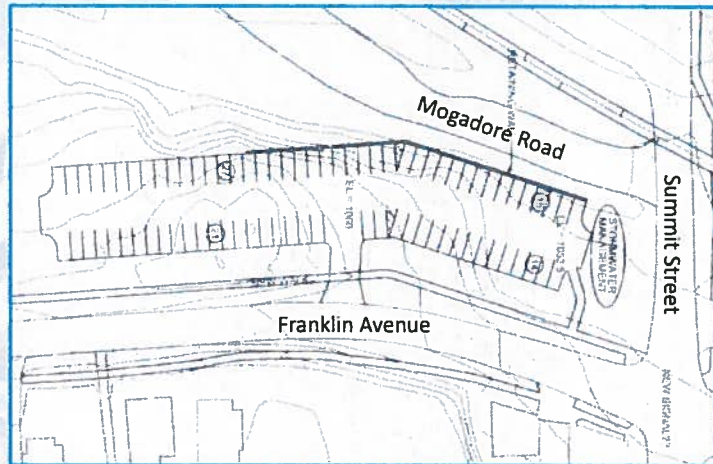


## Potential New Parking Resource

**Davy Drill Property**  
Summit and Franklin

**77 New Parking Spaces**

Development Cost - \$600K - \$800K  
Installing Signal - \$250K  
Acquisition Cost - ?

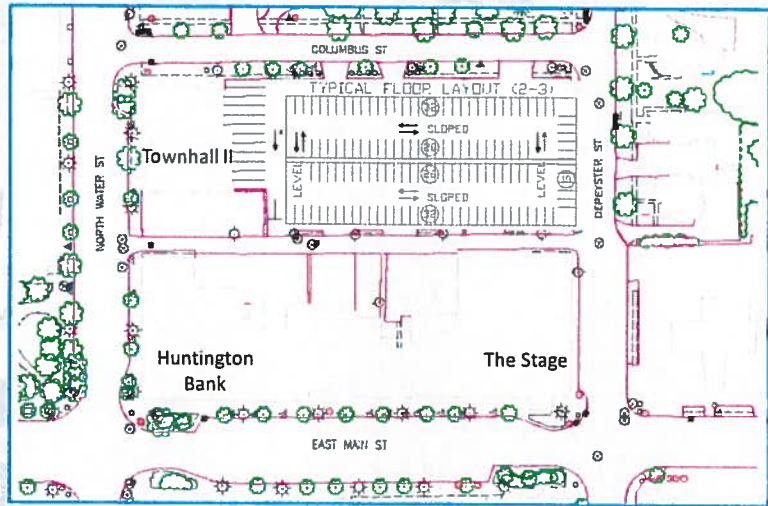


## Potential New Parking Resource

**Columbus Street Lot/Deck**  
Columbus and N. Depeyster

**Up to 344 New Parking Spaces**

Development Cost – \$8M +  
Acquisition Cost - ?

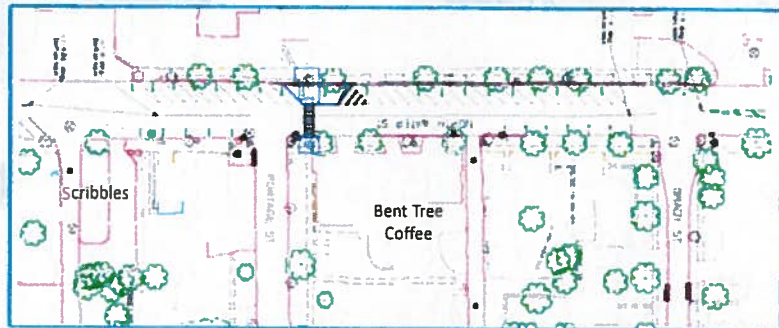


## Potential New Parking Resource

**N. Water St. Reconfiguration**

**11 New Parking Spaces**

Development Cost – Part of an Overall  
Pedestrian  
Access Project









# CITY OF KENT, OHIO

---

## DEPARTMENT OF COMMUNITY DEVELOPMENT

DATE: August 28, 2017  
TO: Dave Ruller, City Manager  
FROM: Bridget Susel, Community Development Director *B.S.*  
RE: Expansion of On-Street Single Space Metered Parking System

---

In October of 2014, Council authorized the adoption of Ordinance 2014-122, which established Chapter 358 as part of the Traffic Code to allow for the installation, regulation and maintenance of the downtown on-street parking meter system.

The primary objective for transitioning some of the downtown on-street parking to a paid parking system was to encourage greater turnover of the vehicles parking on the street in areas of the downtown that tend to have higher concentrations of retail and service-oriented establishments. The parking meter system has proven to be a successful tool in improving enforcement of the two-hour parking limit and many of the downtown businesses have greatly benefitted as a result of the new system.

As a result of the meters, however, there has been an increase in noncompliance in two-hour parking areas that are located just outside of the metered areas, particularly along the west side of N. Depeyster Street, in between E. Main and Columbus Streets. This area was not included in the initial meter installation plan so the Compliance Officers still utilize the old method of chalking tires for monitoring, which can be challenging when trying to definitively document for noncompliance.

The Parking Action Committee (PAC) met on May 24, 2017 and formally approved recommending to Council amending the map included as Exhibit A in Chapter 358 "Parking Meters" to include the installation of meters at the 14 two-hour parking spots located on the west side of N. Depeyster Street, in between East Main and Columbus Streets.

I am respectfully requesting time at the September 6, 2017 Committee session to discuss this matter in greater detail with Council and request authorization, with emergency, to amend Exhibit A of Chapter 358 to allow for the installation of the additional meters. Please let me know if you need any other information in order to add this item to the agenda. Thank you.

Cc: Jim Silver, Law Director  
Tara Grimm, Clerk of Council  
Michelle Lee, Police Chief  
Melanie Baker, Service Director  
Jim Bowling, City Engineer  
David Coffee, Budget & Finance Director

930 Overholt Rd., Kent, Ohio 44240 • (330) 678-8108 fax (330) 678-8030 •  
[www.KentOhio.org](http://www.KentOhio.org)

APPLICATION FOR SPECIAL EVENT  
PARADES, FESTIVALS, CARNIVALS, PUBLIC ASSEMBLIES, ETC.  
City of Kent, 319 S. Water Street, Kent, OH 44240

NAME OF EVENT Kent Clean Transportation Cruise-In  
ORGANIZATION SPONSORING EVENT City of Kent, Sustainability Commission  
APPLICANT NAME Harrison Wicks PHONE 330-676-7572  
ADDRESS 319 S. Water Street, Kent, OH 44240

NAMES AND PHONE NUMBERS OF ALL PERSONS WHO ARE IN CHARGE AND/OR WILL BE IN A RESPONSIBLE POSITION DURING THE EVENT:

Harrison Wicks 330-676-7572  
Judy Nelson 330-931-8613 Julie Morris 360-721-3723

DATE OF EVENT Sunday, Oct 1<sup>st</sup>, 2017 NO. OF PARTICIPANTS Approx 100

REQUESTED PERMIT TIME: Start Set up 7am Start Event 1pm  
End Event 4pm End Cleanup 5pm

IF PARADE: STARTING POINT N/A ENDING POINT \_\_\_\_\_

USE OF CITY WATER NEEDED? N/A  
(IF YES, PLEASE EXPLAIN)

USE OF CITY ELECTRIC NEEDED? Contingent on availability  
(IF YES, PLEASE EXPLAIN)

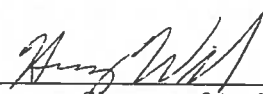
**In addition to the application please submit the following information:**

- Attach map to application showing proposed streets to be blocked off for event, and route of parade or race. (May be hand drawn.)
- Proof of Insurance is required before permit can be issued.
- Please attach list of possible vendors/booths to be part of event (food, retail, etc.).

Please submit application for permit at least 30 days in advance, but no sooner than one year in advance. For additional requirements please review Chapter 316 of The Codified Ordinance of the City of Kent. Please be advised that the use of marking paint on City pavement, curbs, sidewalks or other property is prohibited except if purchased at cost from Service Department (330-678-8105).

By signing this application, I am certifying that I have received a copy of the rules and regulations of Chapter 316 of the Codified Ordinances of the City of Kent, and I fully understand that should the permit be approved, it can be revoked if any of the provisions of this Chapter are violated.

Harrison Wicks  
Name of Applicant

  
Signature of Applicant

Office Use. Do not write below this line. \_\_\_\_\_ Sent to:

Safety, Service, Fire, Police, and Health Departments for review and approval  
via email on 8/29/17

MEMORANDUM AGREEMENT \_\_\_\_\_ YES \_\_\_\_\_ NO  
APPLICATION APPROVED \_\_\_\_\_ APPLICATION DISAPPROVED \_\_\_\_\_

PROOF OF INSURANCE REQUIRED BY ORDINANCE 316.04 HAS BEEN REVIEWED AND APPROVED.

\_\_\_\_\_  
Law Director Date

IF APPLICATION IS APPROVED, PERMIT WILL BE ISSUED BY THE CITY MANAGER.



Imagery ©2017 Google, Map data ©2017 Google United States 50 ft



**Potential Participants : Kent Clean Transportation Cruise-In on Oct 1**

**Organization/Name**

Roosevelt High School Environmental Club  
Kent Environmental Council  
KSU Office of Sustainability

**Private Citizen Vehicles**

**Dealerships**

Great Lakes Honda  
Don Joseph Toyota  
Ron Marhofer Chevrolet  
Nissan of Streetsboro  
Ron Marhofer Nissan  
Classic Honda in Streetsboro  
Dave Walter BMW  
Tesla

# 15th Annual Green Energy Ohio Tour

## Kent Green Energy Ohio Tour

### Sunday October 1, 2017

### 1pm-4pm

This FREE statewide event features self-guided, guided or open house tours in each region of the state and highlights homes, businesses, and public places that are using green technologies such as solar, wind, biomass, green design, energy efficiency and more.

### **Kent Green Energy Ohio Tour Sites**

Kent State University Center for Architecture and Environmental Design

Kent State University Fieldhouse Solar Array

Kent State University solar powered USB charging bench

Kent State University Zero Emission Vehicle

Kent Cooperative Housing home with solar panels

Local Kent Residence Home with solar panels

Standing Rock Cultural Arts Center Gallery solar panels & solar battery generator

### **Kent Clean Transportation Cruise In**

Features electric vehicles and showcases the latest alternative fuel technologies including hybrids. Located at X from X to X.

[www.kent.edu/sustainability](http://www.kent.edu/sustainability)

Search the Green Energy Ohio Tour sites: <http://www.ases.org/tour/locations/>

### **Greater Akron Solar Tour September 30, 2017**

Learn about modern green technologies and visit various solar arrays in Akron from 9:00am-3:30pm. Registration is required. Contact Joan Hummel 330-375-2550 ext. 7310

**Kent Green Energy Ohio Tour Co-sponsored by**

